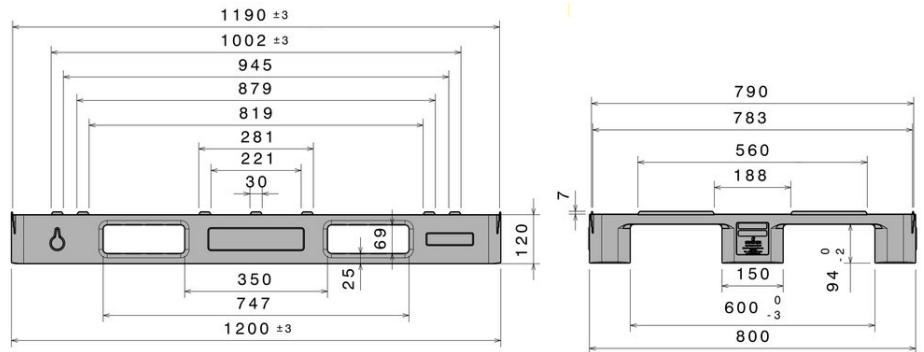


SL1

1200 x 800 mm



Art.-Nr.: 83259801

Technical Data*1

Dimensions L x W x H (mm)	1200 x 800 x 120		
Weight (kg)	7,0 kg		
Material*2	PE		
Load capacity (kg)*3	Static 2000 kg	Dynamic 1000 kg	In Racking System

Characteristics

Colour: basalt grey
 Runners: 3, unwelded
 Rims: 7 mm
 Temperature stability: -30 °C to +40 °C, briefly up to +90 °C

Options

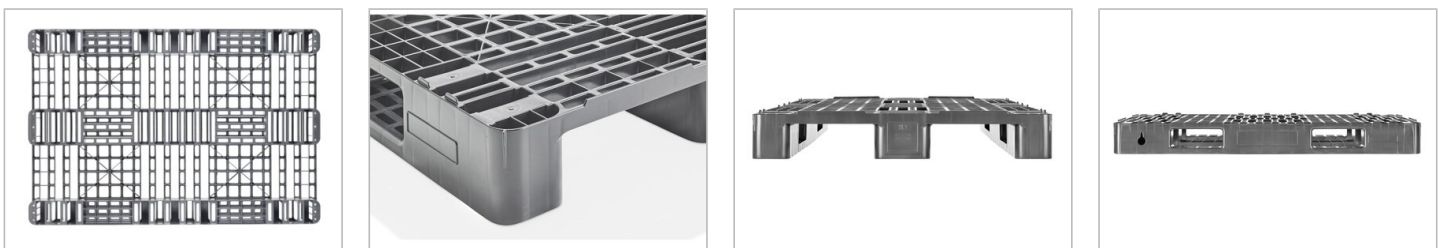
Rimoptions
 Lid

Loading quantities (Pcs / Approximate amount)

Container	Container 20': 248	Container 40' High Cube: 558
	Container 40': 504	Conventional trailer 45' high cube container: 680
Truck	MEGA-Trailer: 816	Jumbo: 912

Labelling

Customised printing and numbering available on request depending on quantity. Position upon consultation.



*1 All technical data include characteristic features, which have been tested under specially defined conditions. Varying data may result from different conditions of usage such as loading method, prevailing temperature and length of storage time. All data and specified information are subject to change without notice. Our service team is pleased to be at your disposal to check the special requirements of your individual application.

*2 Our service team is pleased to be at your disposal if you require exact information about material compositions.

*3 **Static load:** resistance to pressure on a flat ground surface and an evenly distributed load at a room temperature of approx. 20 °C.

Dynamic load: on a forklift with an evenly distributed load at a room temperature of approx. 20 °C.

In racking system: evenly distributed load (sacks) along the longitudinal sides. Resting on two supports for over 100 h at a room temperature of approx. 20 °C.