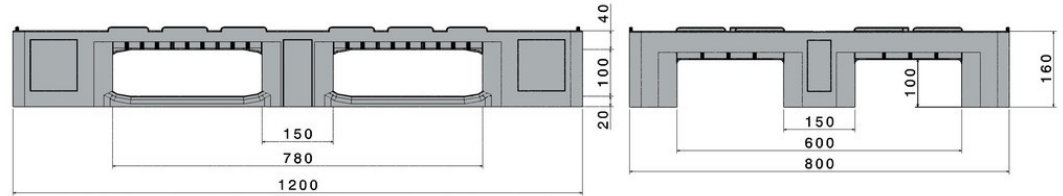


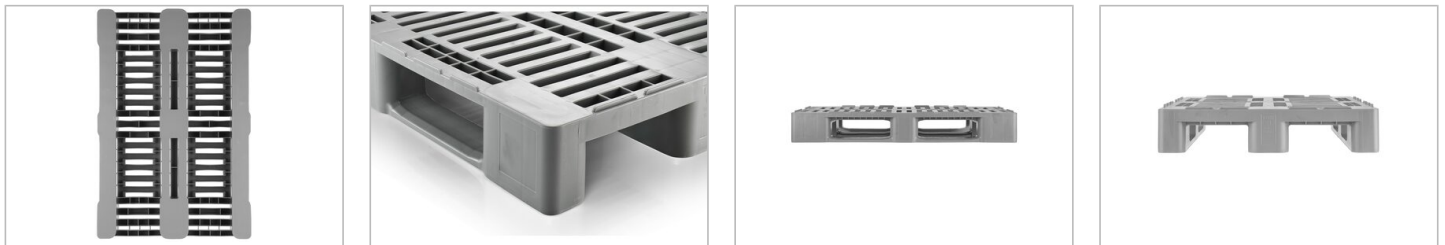
H1

1200 x 800 mm



Art.-Nr.: 83100801

Technical data			
Dimensions L x W x H (mm)	1200 x 800 x 160		
Weight (kg)	18.0 kg		
Material	PE		
Load capacity (kg)	Static 5000 kg	Dynamic 1250 kg	In Racking System 1000 kg
Characteristics		Options	
Colour: light grey Runners: 3, welded Rims: 7 mm Temperature stability: -30 °C to +40 °C, briefly up to +90 °C		Palgrip® anti-slip runners	
Loading quantities (Pcs / Approximate amount)			
Container	Container 20': 192 Container 40': 390	Container 40' High Cube: 440 Conventional trailer 45' high cube container: 510	
Truck	MEGA-Trailer: 594	Jumbo: 684	
Labelling			
Customised printing and numbering available on request depending on quantity. Position upon consultation.			



*1 All technical data include characteristic features, which have been tested under specially defined conditions. Varying data may result from different conditions of usage such as loading method, prevailing temperature and length of storage time. All data and specified information are subject to change without notice. Our service team is pleased to be at your disposal to check the special requirements of your individual application.

*2 Our service team is pleased to be at your disposal if you require exact information about material compositions.

*3 Static load: resistance to pressure on a flat ground surface and an evenly distributed load at a room temperature of approx. 20 °C.
 Dynamic load: on a forklift with an evenly distributed load at a room temperature of approx. 20 °C.
 In racking system: evenly distributed load (E2 boxes or euro fish boxes) along the longitudinal sides. Resting on two supports for over 100h at a room temperature of approx. 20 °C.