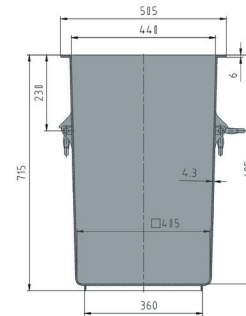




Large containers

125 l



Art. no. 81031110

Technical data *1

External Dimensions L x W x H (mm) 505 x 505 x 715

Internal Dimensions L x W x H (mm) 440 x 440 x 695

Weight (kg) 5.8

Volume (l) 125

Material HDPE

Load capacity (kg)  **Holding Capacity**
125

 **Extra Load**
265

Stacking height (mm)  **When nested**
250

 **When stacked**
695

Characteristics

Colour: nature
Nestable, stackable with lid
For temperatures ranging from -30 °C to +40 °C, briefly up to +90 °C
Resistant to most chemicals and cleaning agents
Food-safe. HACCP compliant

Options

Lid

Loading quantities (pcs/approx.)

On request.

Labelling options

Customised printing and numbering available on request depending on quantity. Position upon consultation.



*1 All technical data include characteristic features, which have been tested under specially defined conditions. Varying data may result from different conditions of usage such as loading method, prevailing temperature and length of storage time. All data and specified information are subject to change without notice. Our service team is pleased to be at your disposal to check the special requirements of your individual application.