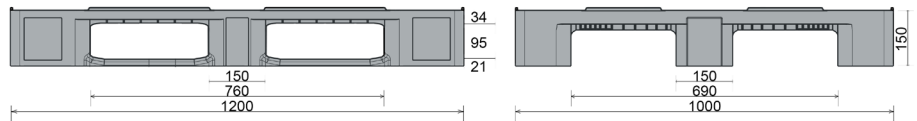


CS3

1200 x 1000 mm



Art. no. 83229811

Technical data ^{*1}

Dimensions L x W x H (mm)	1200 x 1000 x 150
Weight (kg)	18.0
Material ^{*2}	HDPE, Regranulated material
Load capacity (kg) ^{*3}	



Static
5000



Dynamic
1000



In racking system
800

Characteristics

Colour: basalt grey
Runners: 3, welded
Rims: 7 mm
Temperature stability: -30 °C to +40 °C, briefly up to +90 °C

Options

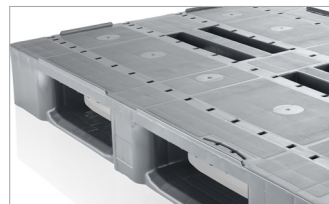
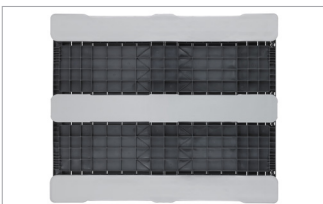
Transponder
Reinforcement profiles
Rim options
Palgrip® anti-slip runners

Loading quantities (pcs/approx.)

	Container	Container 20': 140 Container 40': 330	Container 40' High Cube: 365 Conventional trailer 45' high cube container: 416
		Truck	MEGA-Trailer: 494 Jumbo: 532-570

Labelling options

Customised printing and numbering available on request depending on quantity. Position upon consultation.



^{*1} All technical data include characteristic features, which have been tested under specially defined conditions. Varying data may result from different conditions of usage such as loading method, prevailing temperature and length of storage time. All data and specified information are subject to change without notice. Our service team is pleased to be at your disposal to check the special requirements of your individual application.

^{*2} Our service team is pleased to be at your disposal if you require exact information about material compositions.

^{*3} **Static load:** resistance to pressure on a flat ground surface and an evenly distributed load at a room temperature of approx. 20 °C.

Dynamic load: on a forklift with an evenly distributed load at a room temperature of approx. 20 °C.

In racking system: evenly distributed load (sacks) along the longitudinal sides. Resting on two supports for over 100 h at a room temperature of approx. 20°C.