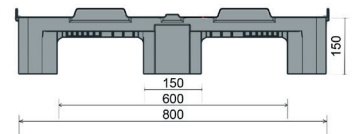
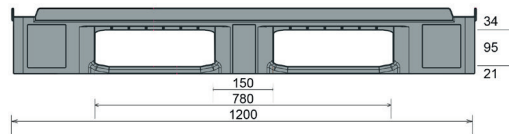





CS1

1200 x 800 mm



Art. no. 83199818

Technical data ^{*1}

Dimensions L x W x H (mm)	1200 x 800 x 150
Weight (kg)	14.5
Material ^{*2}	HDPE, Regranulated material
Load capacity (kg) ^{*3}	<div style="display: flex; justify-content: space-around; align-items: center;"> <div style="text-align: center;">  <p>Static 5000</p> </div> <div style="text-align: center;">  <p>Dynamic 1000</p> </div> <div style="text-align: center;">  <p>In racking system 800</p> </div> </div>



Characteristics

Colour: basalt grey
 Runners: 3, welded
 Rims: 22 mm
 Temperature stability: -30 °C to +40 °C, briefly up to +90 °C

Options

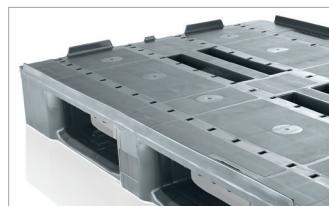
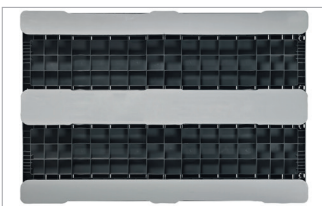
Transponder
 Reinforcement profiles
 Rim options
 Palgrip® anti-slip runners

Loading quantities (pcs/approx.)

	Container	Container 20': 215 Container 40': 440	Container 40' High Cube: 490 Conventional trailer 45' high cube container: 544
		Truck	MEGA-Trailer: 646 Jumbo: 684 - 722

Labelling options

Customised printing and numbering available on request depending on quantity. Position upon consultation.



^{*1} All technical data include characteristic features, which have been tested under specially defined conditions. Varying data may result from different conditions of usage such as loading method, prevailing temperature and length of storage time. All data and specified information are subject to change without notice. Our service team is pleased to be at your disposal to check the special requirements of your individual application.

^{*2} Our service team is pleased to be at your disposal if you require exact information about material compositions.

^{*3} **Static load:** resistance to pressure on a flat ground surface and an evenly distributed load at a room temperature of approx. 20 °C.

Dynamic load: on a forklift with an evenly distributed load at a room temperature of approx. 20 °C.

In racking system: evenly distributed load (sacks) along the longitudinal sides. Resting on two supports for over 100 h at a room temperature of approx. 20°C.