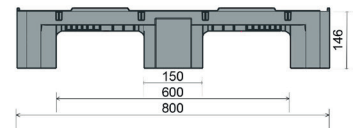
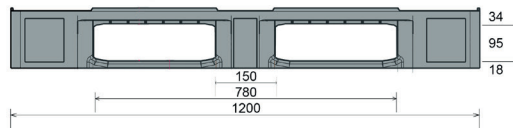


CS1

1200 x 800 mm



Art. no. 83199801

Technical data ^{*1}

Dimensions L x W x H (mm)	1200 x 800 x 146
Weight (kg)	12.5
Material ^{*2}	HDPE, Regranulated material
Load capacity (kg) ^{*3}	



Static
5000



Dynamic
1000



In racking system
400



Characteristics

Colour: basalt grey
Runners: 3, unwelded
Rims: 7 mm
Temperature stability: -30 °C to +40 °C, briefly up to +90 °C

Options

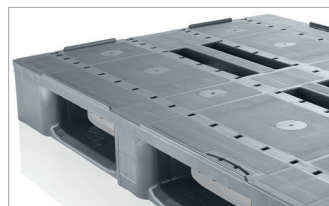
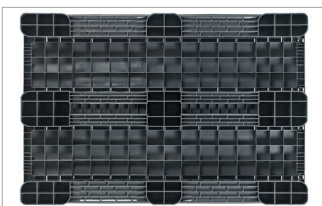
Transponder
Reinforcement profiles
Rim options
Welded runner
Palgrip® anti-slip runners

Loading quantities (pcs/approx.)

	Container	Container 20': 215 Container 40': 440	Container 40' High Cube: 490 Conventional trailer 45' high cube container: 544
		Truck	MEGA-Trailer: 646 Jumbo: 684 - 722

Labelling options

Customised printing and numbering available on request depending on quantity. Position upon consultation.



^{*1} All technical data include characteristic features, which have been tested under specially defined conditions. Varying data may result from different conditions of usage such as loading method, prevailing temperature and length of storage time. All data and specified information are subject to change without notice. Our service team is pleased to be at your disposal to check the special requirements of your individual application.

^{*2} Our service team is pleased to be at your disposal if you require exact information about material compositions.

^{*3} **Static load:** resistance to pressure on a flat ground surface and an evenly distributed load at a room temperature of approx. 20 °C.

Dynamic load: on a forklift with an evenly distributed load at a room temperature of approx. 20 °C.

In racking system: evenly distributed load (sacks) along the longitudinal sides. Resting on two supports for over 100 h at a room temperature of approx. 20°C.