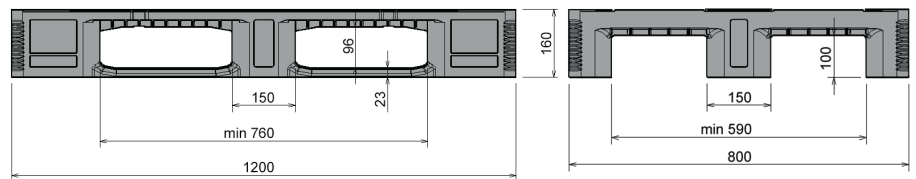


CR1 without steel




1200 x 800 mm



Art. no. 83230700





Technical data ^{*1}

Dimensions L x W x H (mm)	1200 x 800 x 160		
Weight (kg)	16.0		
Material ^{*2}	HDPE, Virgin material		
Load capacity (kg) ^{*3}	 Static 5000	 Dynamic 1250	 In racking system 1000

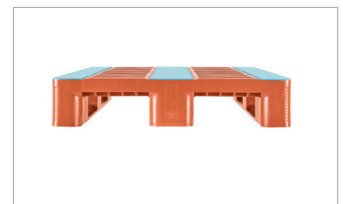
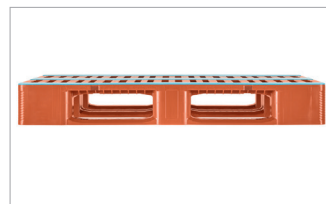
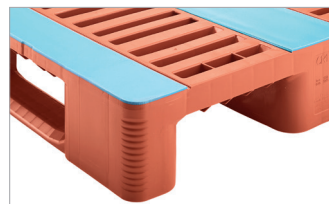
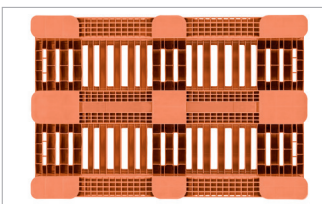
Characteristics	Options
Colour: red brown / light blue Runners: 3, unwelded Antislip: Yes, 3 Palgrip® anti-slip strips on the top deck Temperature stability: -30 °C to +40 °C, briefly up to +90 °C	Transponder Reinforcement profiles Rim options

Loading quantities (pcs/approx.)

 Container	Container 20': 192 Container 40': 390	Container 40' High Cube: 440 Conventional trailer 45' high cube container: 510
 Truck	MEGA-Trailer: 612	Jumbo: 684

Labelling options

Customised printing and numbering available on request depending on quantity. Position upon consultation.



^{*1} All technical data include characteristic features, which have been tested under specially defined conditions. Varying data may result from different conditions of usage such as loading method, prevailing temperature and length of storage time. All data and specified information are subject to change without notice. Our service team is pleased to be at your disposal to check the special requirements of your individual application.

^{*2} Our service team is pleased to be at your disposal if you require exact information about material compositions.

^{*3} **Static load:** resistance to pressure on a flat ground surface and an evenly distributed load at a room temperature of approx. 20 °C.

Dynamic load: on a forklift with an evenly distributed load at a room temperature of approx. 20 °C.

In racking system: evenly distributed load (sacks) along the longitudinal sides. Resting on two supports for over 100 h at a room temperature of approx. 20 °C.