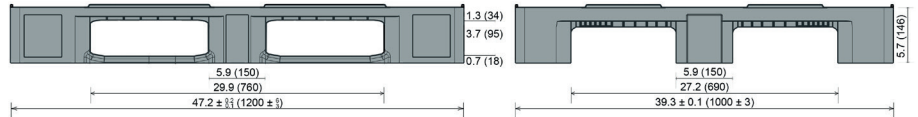


## CS3

48 x 40 inches



Art. no. 83229831



### Technical data \*1

Dimensions in inches (L x W x H)\*2 47.2 x 39.3 x 5.7 (in mm: 1200 x 1000 x 146)

Weight in lbs\*2 41.0 (in kg: 18.5)

Material\*3 HDPE, Regranulated material

Load capacity in lbs\*4



**Static**  
11000 (in kg: 5000)



**Dynamic**  
2750 (in kg: 1250)



**In racking system**  
2200 (in kg: 1000)

### Characteristics

Color: basalt grey  
Runners: 3, unwelded  
Reinforcement rods: 3  
Lips (height in inches): 0.28 (in mm: 7.0)  
Temperature stability in F: -22° to +104°, briefly up to +194°

### Options

Transponder  
Lip options  
Welded runners

### Loading quantities (pcs/approx.)



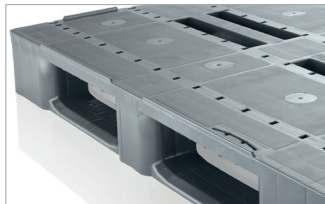
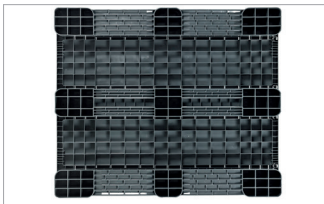
Container

Container 20': 140

Container 40' High Cube: 365

### Labelling options

Customized printing and numbering available on request depending on quantity. Position upon consultation.



\*1 All technical data include characteristic features, which have been tested under specially defined conditions. Varying data may result from different conditions of usage such as loading method, prevailing temperature and length of storage time. All data and specified information are subject to change without notice. Our service team is pleased to be at your disposal to check the special requirements of your individual application.

\*2 All measurements and weight indications are conversion values derived from the original metric values. The possible range of tolerance can be found in the technical drawing. All tolerances are within the accepted tolerance range as specified in the respective DIN norm. If you require more information on our tolerances please contact our sales team.

\*3 Our service team is pleased to be at your disposal if you require exact information about material compositions.

\*4 Load capacity indications are conversion values derived from original metric values. Minor rounding differences are possible.

**Static load:** resistance to pressure on a flat ground surface and an evenly distributed load at a room temperature of approx. 68 °F (20 °C).

**Dynamic load:** on a forklift with an evenly distributed load at a room temperature of approx. 68 °F (20 °C).

**In racking system:** evenly distributed load along the longitudinal sides. Resting on two supports for over 100 h at a room temperature of approx. 68 °F (20 °C).

Craemer US Corporation

P.O.Box: 30725 US HWY 19 N #304

Palm Harbor, FL 34684

USA

Contact us:

Tel: +1 (727) 312 8859

E-Mail: [usa\\_office@craemer.com](mailto:usa_office@craemer.com)

Web: [www.craemer.com/usa](http://www.craemer.com/usa)

