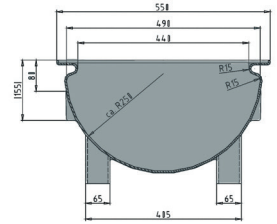
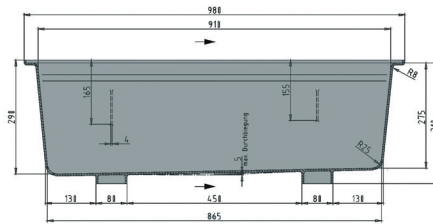




Trough

100 l



Art. no. 81291111

Technical data *1

External Dimensions L x W x H (mm) 980 x 550 x 310

Internal Dimensions L x W x H (mm) 910 x 440 x 275

Weight (kg) 6.3


Volume (l) 100

Material HDPE

Load capacity (kg)  **Holding Capacity**
100

 **Extra Load**
—

Stacking height (mm)  **Nesting dimension**
—

 **Stacking dimension**
—

Characteristics

- Colour: nature
- With feet
- Easy grip all around the top
- With drain and plug
- For temperatures ranging from -30°C to +40°C, briefly up to +90°C
- Resistant to most chemicals and cleaning agents
- Food-safe. HACCP compliant

Options

Stand

Loading quantities (pcs/approx.)

On request.

Labelling options

Customised printing and numbering available on request depending on quantity. Position upon consultation.



*1 All technical data include characteristic features which have been tested under specially defined conditions. Varying data may result from different conditions of usage such as loading method, prevailing temperature and length of storage time. Our serviceteam is pleased to be at your disposal to check the special requirements of your individual application.