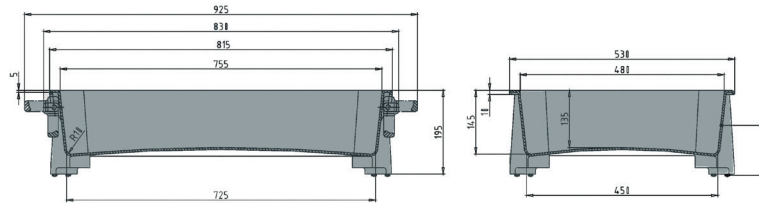




Transport and stacking boxes

50 l



Art. no. 81251110

Technical data *1	
External Dimensions L x W x H (mm)	830 x 530 x 200
Internal Dimensions L x W x H (mm)	755 x 480 x 135
Weight (kg)	4.8
Volume (l)	50
Material	HDPE
Load capacity (kg)	<div style="display: flex; justify-content: space-around;"> <div style="text-align: center;">  <p>Holding Capacity 25</p> </div> <div style="text-align: center;">  <p>Extra Load 250</p> </div> </div>
Stacking height (mm)	<div style="display: flex; justify-content: space-around;"> <div style="text-align: center;">  <p>Nesting dimension —</p> </div> <div style="text-align: center;">  <p>Stacking dimension —</p> </div> </div>
Characteristics	Options
Colour: nature Handles 4 feet Stackable For temperatures ranging from -30°C to +40°C, briefly up to +90°C Resistant to most chemicals and cleaning agents Food-safe. HACCP compliant	Trolley
Loading quantities (pcs/approx.)	
On request.	
Labelling options	
Customised printing and numbering available on request depending on quantity. Position upon consultation.	

*1 All technical data include characteristic features which have been tested under specially defined conditions. Varying data may result from different conditions of usage such as loading method, prevailing temperature and length of storage time. Our serviceteam is pleased to be at your disposal to check the special requirements of your individual application.