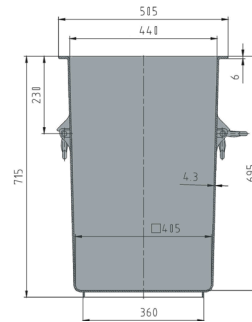




# Large containers

125 l



Art. no. 81031110

## Technical data \*1

External Dimensions L x W x H (mm) 505 x 505 x 715

Internal Dimensions L x W x H (mm) 440 x 440 x 695

Weight (kg) 5.8

Volume (l) 125

Material HDPE

Load capacity (kg)



**Holding Capacity**  
125



**Extra Load**  
265

Stacking height (mm)



**Nesting dimension**  
—



**Stacking dimension**  
—

## Characteristics

Colour: nature  
Nestable, stackable with lid  
For temperatures ranging from -30 °C to +40 °C, briefly up to +90 °C  
Resistant to most chemicals and cleaning agents  
Food-safe. HACCP compliant

## Options

Lid

## Loading quantities (pcs/approx.)

On request.

## Labelling options

Customised printing and numbering available on request depending on quantity. Position upon consultation.



\*1 All technical data include characteristic features which have been tested under specially defined conditions. Varying data may result from different conditions of usage such as loading method, prevailing temperature and length of storage time. Our serviceteam is pleased to be at your disposal to check the special requirements of your individual application.