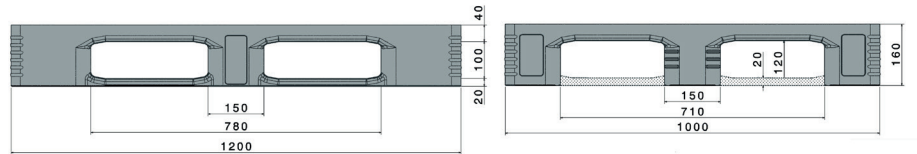




TC3-5

1200 x 1000 mm



Art. no. 87030840

Technical data ^{*1}

Dimensions L x W x H (mm)	1200 x 1000 x 160
Weight (kg)	22.5
Material ^{*3}	HDPE, Virgin material
Load capacity (kg) ^{*2}	



Static
7500



Dynamic
1500



In racking system
1250

Characteristics

Colour: light grey
Runners: 5, unwelded
Rims: 7 mm
Temperatur stability: -30°C to +40°C, briefly up to +90°C

Options

Transponder
Reinforcement profiles
Rims

Loading quantities (pcs/approx.)



Container

Container 20': **141**
Container 40': **300**

Container 40' High Cube: **340**
Conventional trailer 45' high cube container: **390**



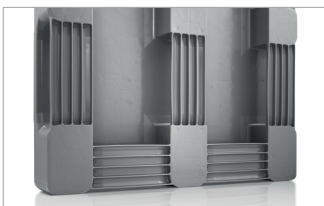
Truck

MEGA-Trailer: **468**

Jumbo: **540**

Labelling options

Customised printing and numbering available on request depending on quantity. Position upon consultation.



^{*1} All technical data include characteristic features, which have been tested under specially defined conditions. Varying data may result from different conditions of usage such as loading method, prevailing temperature and length of storage time. Our service team is pleased to be at your disposal to check the special requirements of your individual application.

^{*2} **Static load:** resistance to pressure on a flat ground surface and an evenly distributed load at a room temperature of approx. 20 °C.

Dynamic load: on a forklift with an evenly distributed load at a room temperature of approx. 20 °C.

In racking system: evenly distributed load (sacks) along the longitudinal sides. Resting on two supports for over 100 h at a room temperature of approx. 20°C.

^{*3} Although still within ISO compulsory range, the load-bearing test results using pallets made from regranulated material show slightly more variation than those from virgin HDPE.