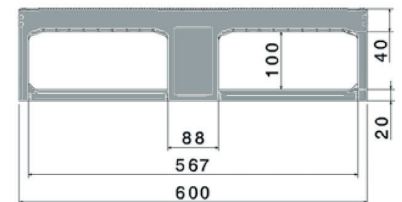
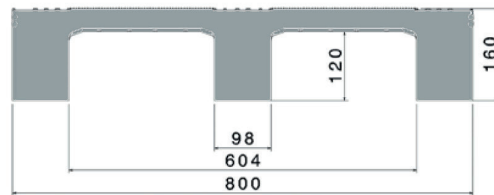




D2

800 x 600 mm



Art. no. 83512201

Technical data ^{*1}

Dimensions L x W x H (mm)	800 x 600 x 160
Weight (kg)	7.5
Material ^{*3}	PP, Regranulated material
Load capacity (kg) ^{*2}	<div style="display: flex; justify-content: space-around; align-items: center;"> <div style="text-align: center;">  Static 2000 </div> <div style="text-align: center;">  Dynamic 500 </div> <div style="text-align: center;">  In racking system — </div> </div>

Characteristics

Colour: black
 Runners: 3, unwelded
 Rims: 7 mm
 Temperature stability: -30 °C to +40 °C, briefly up to +90 °C

Options

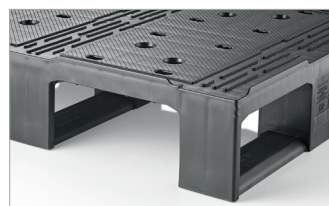
Rim options
 Antislip

Loading quantities (pcs/approx.)

	Container	Container 20': 384 Container 40': 780	Container 40' High Cube: 880 Conventional trailer 45' high cube container: 1020
		Truck	MEGA-Trailer: 1224 Jumbo: 1368

Labelling options

Customised printing and numbering available on request depending on quantity. Position upon consultation.



^{*1} All technical data include characteristic features, which have been tested under specially defined conditions. Varying data may result from different conditions of usage such as loading method, prevailing temperature and length of storage time. Our service team is pleased to be at your disposal to check the special requirements of your individual application.

^{*2} **Static load:** resistance to pressure on a flat ground surface and an evenly distributed load at a room temperature of approx. 20 °C.

Dynamic load: on a forklift with an evenly distributed load at a room temperature of approx. 20 °C.

In racking system: evenly distributed load (sacks) along the longitudinal sides. Resting on two supports for over 100 h at a room temperature of approx. 20°C.

^{*3} Although still within ISO compulsory range, the load-bearing test results using pallets made from regnanulated material show slightly more variation than those from virgin HDPE.