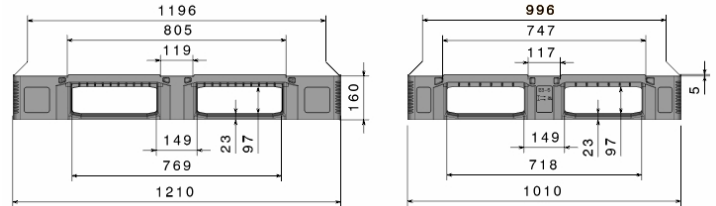
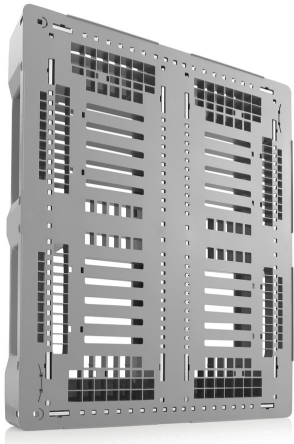


E3-5




48" x 40"



Art.-Nr.: 83520861

Technical Data*1

Dimensions L x W x H	48 x 40 x 6.3" (1200 x 1000 x 160 mm)
Weight (lbs)	54 lbs
Material*2	PE

Load capacity (lbs)	 Static 16550 lbs	 Dynamic 3300 lbs	 In Racking System 3100 lbs
---------------------	--	---	--


Characteristics

Color: basalt gray
 Runners: 5, unwelded
 Reinforcement profiles: 6
 Lips: 0.2"
 Temperature stability: -22°F to +104°F, briefly up to +194°F

Options

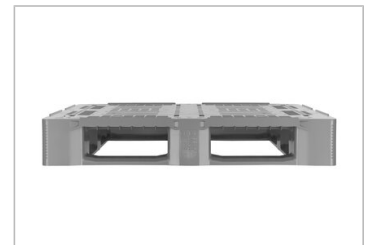
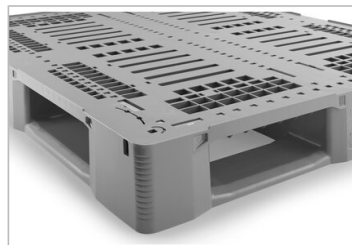
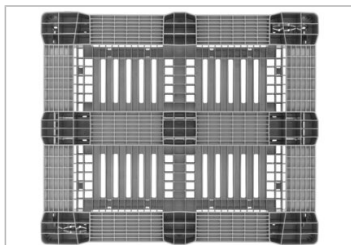
Transponder (RFID)
 Lip options
 Lid
 Palgrip® anti-slip clips on the underside of the deck

Loading quantities (Pcs / Approximate amount)

 Container	Container 20': 140	Container 40' High Cube: 340
	Container 40': 300	Conventional trailer 45' high cube container: -
 Truck	MEGA-Trailer: 468	Jumbo: 504 - 540

Labelling

Customized printing and numbering available on request depending on quantity. Position upon consultation.



*1 All technical data reflect characteristic features tested under specially defined conditions. Variations may occur due to different usage conditions, such as loading method, ambient temperature, and storage duration. All data and specifications are subject to change without notice. Our service team is happy to assist in reviewing the specific requirements of your individual application.

*2 Our service team is available to provide precise information about material compositions.

*3 **Static load:** Resistance to pressure on a flat surface with an evenly distributed load at a room temperature of approx. 68°F.

Dynamic load: On a forklift with an evenly distributed load at a room temperature of approx. 68°F.

In racking system: Evenly distributed load (sacks) along the longitudinal sides, resting on two supports for over 100 h at a room temperature of approx. 68°F.