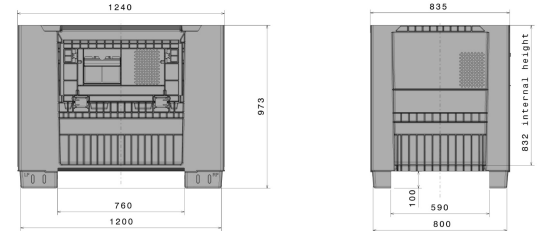
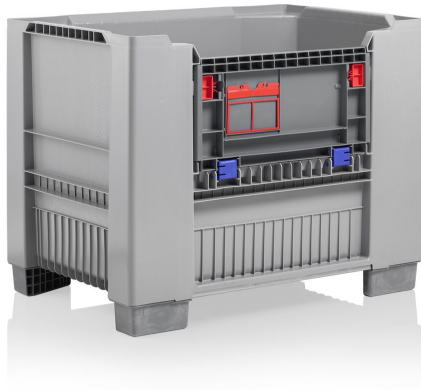


KUBO

48.8 x 32.8 x 38.3" / 161 gal



Art.-Nr.: 82601811

Technical Data*1


External Dimensions	48.8 x 32.8 x 38.3" (1240 x 835 x 973 mm)	Internal Dimensions	44.6 x 28.6 x 32.8" (1133 x 726 x 832 mm)
Weight (lbs)	113.5 lbs	Volume	160 gal
Material*2	PE		

Load capacity (lbs)	 Extra Load 6650 lbs	 Holding Capacity 2200 lbs	 Dynamic Load 4650 lbs
---------------------	---	---	---

Characteristics Options

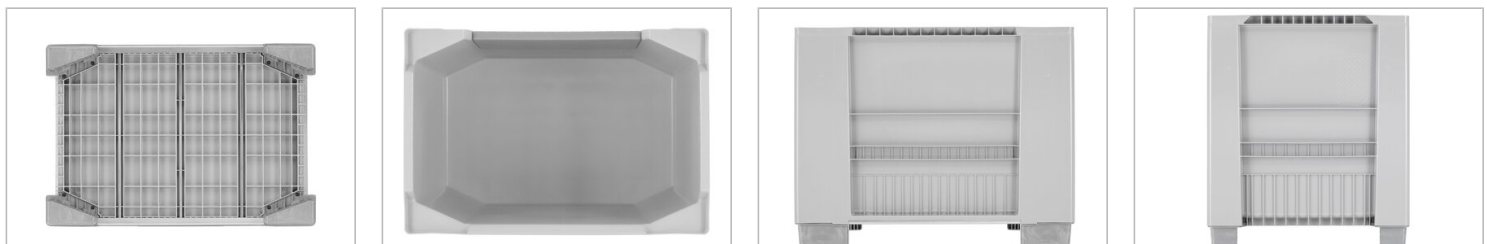
<p>Color: light gray</p> <p>Body injection-moulded in one piece</p> <p>Runners: 4 feet</p> <p>Stackable</p> <p>Temperature stability: -22°F to +104°F, briefly up to +194°F</p> <p>Resistant to most chemicals and cleaning agents</p> <p>External dimensions based on UIC 435-3</p> <p>External dimensions compatible with the metal grid box (Gitterbox) enable use in existing systems.</p>	<p>Documents holder</p> <p>Transponder (RFID)</p>
--	---

Loading quantities (Pcs / Approximate amount)

 Truck	MEGA-Trailer: 96	Jumbo: 108
---	-------------------------	-------------------

Labelling

Customized printing and numbering available on request depending on quantity. Position upon consultation.



*1 All technical data include characteristic features, which have been tested under specially defined conditions. Varying data may result from different conditions of usage such as loading method, prevailing temperature and length of storage time. All data and specified information are subject to change without notice. Our service team is pleased to be at your disposal to check the special requirements of your individual application.

*2 Our service team is pleased to be at your disposal if you require exact information about material compositions.

*3 Extra load with a holding capacity of 2250 lbs at room temperature. Dynamic load on a forklift with an evenly distributed load at a room temperature.