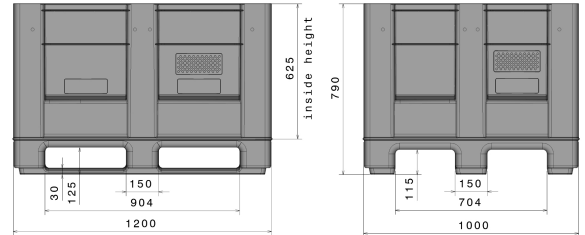




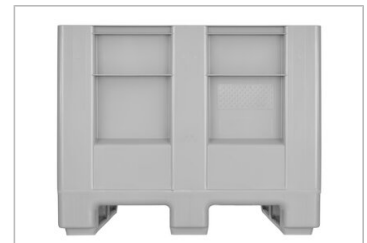
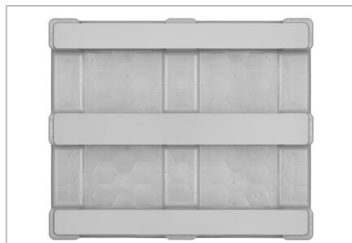
HB3

47.2 x 39.4 x 31.1 " / 164 gal

Art.-Nr.: 83421800



Technical Data* ¹				
External Dimensions		47.2 x 39.4 x 31.1 " (1200 x 1000 x 790 mm)	Internal Dimensions	43.9 x 36.0 x 24.6 " (1115 x 915 x 625 mm)
Weight (lbs)		95.9 lbs	Volume	165 gal
Material* ²		PE		
Load capacity (lbs)		 Extra Load 11000 lbs	 Holding Capacity 2000 lbs	 Dynamic Load 4200 lbs
Characteristics			Options	
Color: light gray			Reinforcement profiles	
Runners: 3, welded			Lid	
Stackable			Drain port	
Temperature stability: -22°F to +104°F, briefly up to +194°F			Transponder (RFID)	
Resistant to most chemicals and cleaning agents				
Food-safe. HACCP compliant				
Container is based on DIN EN 13626 and DIN EN ISO 12048				
Loading quantities (Pcs / Approximate amount)				
 Container		Container 20': 32 Container 40': 84		Container 40' High Cube: 84 Conventional trailer 45' high cube container: -
 Truck		MEGA-Trailer: 104		Jumbo: 112-120
Labelling				
Customized printing and numbering available on request depending on quantity. Position upon consultation.				



*1 All technical data include characteristic features, which have been tested under specially defined conditions. Varying data may result from different conditions of usage such as loading method, prevailing temperature and length of storage time. All data and specified information are subject to change without notice. Our service team is pleased to be at your disposal to check the special requirements of your individual application.

*2 Our service team is pleased to be at your disposal if you require exact information about material compositions.

*3 Extra load with a holding capacity of 1985 lbs (900 kg) at room temperature. Dynamic load on a forklift with an evenly distributed load at a room temperature.