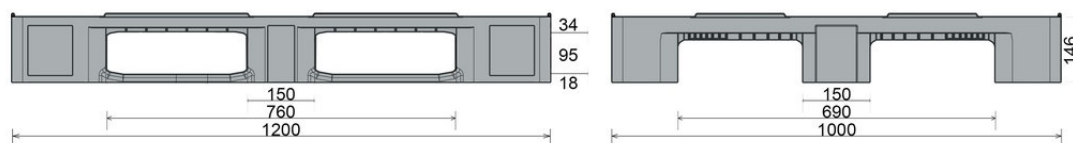





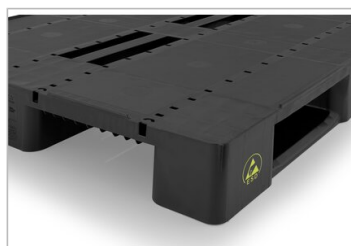
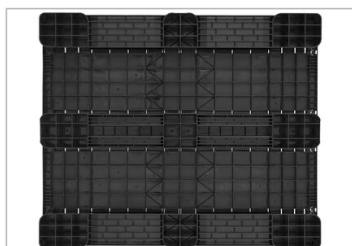
CS₃ ESD

47.2" x 39.4"



Art.-Nr.: 83222201

Technical Data*1			
Dimensions L x W x H	47.2 x 39.4 x 5.7 " (1200 x 1000 x 146 mm)		
Weight(lbs)	35.3 lbs		
Material*2	PE , ESD		
Load capacity (lbs)	 Static 11000 lbs	 Dynamic 2200 lbs	 In Racking System 900 lbs
Characteristics		Options	
Color: black		Lip options	
Runners: 3, unwelded		Transponder (RFID)	
Lips: 0.3 "		Lid	
Temperature stability: - 22°F to +104°F, briefly up to +194°F			
Conductive pallet			
Surface resistance of ≥ 1 x 10 E4 Ohm to < 1 x 10 E11 Ohm			
Loading quantities (Pcs / Approximate amount)			
 Container	Container 20': 140 Container 40': 330	Container 40' High Cube: 365 Conventional trailer 45' high cube container: -	
 Truck	MEGA-Trailer: 494	Jumbo: 532-570	
Labelling			
Customized printing and numbering available on request depending on quantity. Position upon consultation.			



*1 All technical data reflect characteristic features tested under specially defined conditions. Variations may occur due to different usage conditions, such as loading method, ambient temperature, and storage duration. All data and specifications are subject to change without notice. Our service team is happy to assist in reviewing the specific requirements of your individual application.

*2 Our service team is available to provide precise information about material compositions.

*3 **Static load:** Resistance to pressure on a flat surface with an evenly distributed load at a room temperature of approx. 68°F.

Dynamic load: On a forklift with an evenly distributed load at a room temperature of approx. 68°F.

In racking system: Evenly distributed load (sacks) along the longitudinal sides, resting on two supports for over 100 h at a room temperature of approx. 68°F.