

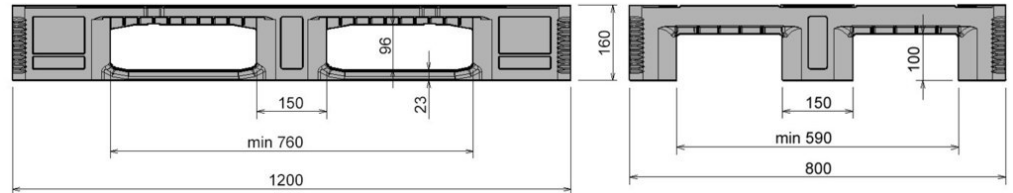


CR1




47.2" x 31.5"

Art.-Nr.: 83239800

Palgrip



Technical Data*1

Dimensions L x W x H	47.2 x 31.5 x 6.3" (1200 x 800 x 160 mm)		
Weight (lbs)	35.3 lbs		
Material*2	PE		
Load capacity (lbs)	 Static 11000 lbs	 Dynamic 2800 lbs	 In Racking System 2200 lbs

Characteristics

Color: basalt gray / blue
 Runners: 3, unwelded
 Antislip: Palgrip® anti-slip strips on the top deck
 Temperature stability: -22°F to +104°F, briefly up to +194°F

Options

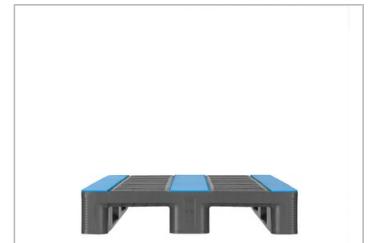
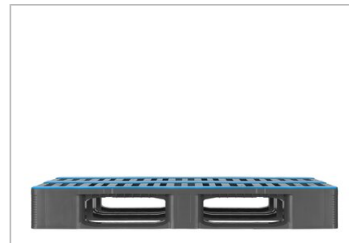
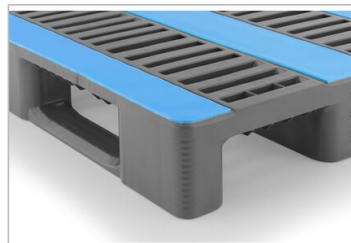
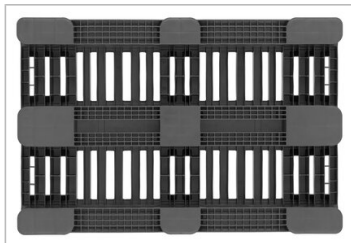
Transponder (RFID)
 Reinforcement profiles
 Lip options
 Lid

Loading quantities (Pcs / Approximate amount)

 Container	Container 20': 192 Container 40': 390	Container 40' High Cube: 440 Conventional trailer 45' high cube container: -
 Truck	MEGA-Trailer: 612	Jumbo: 684

Labelling

Customized printing and numbering available on request depending on quantity. Position upon consultation.



*1 All technical data reflect characteristic features tested under specially defined conditions. Variations may occur due to different usage conditions, such as loading method, ambient temperature, and storage duration. All data and specifications are subject to change without notice. Our service team is happy to assist in reviewing the specific requirements of your individual application.

*2 Our service team is available to provide precise information about material compositions.

*3 **Static load:** Resistance to pressure on a flat surface with an evenly distributed load at a room temperature of approx. 68°F.
Dynamic load: On a forklift with an evenly distributed load at a room temperature of approx. 68°F.

In racking system: Evenly distributed load (sacks) along the longitudinal sides, resting on two supports for over 100 h at a room temperature of approx. 68°F.