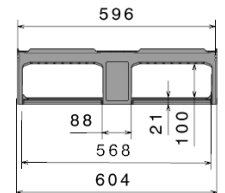
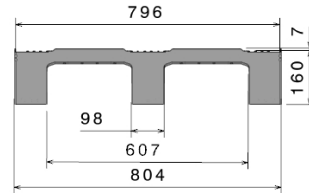




D2

31.5" x 23.6"

Art.-Nr.: 83512201



Technical Data*1

Dimensions L x W x H	31.5 x 23.6 x 6.3" (800 x 600 x 160 mm)		
Weight (lbs)	18.7 lbs		
Material*2	PP		
Load capacity (lbs)	Static 4450 lbs	Dynamic 1100 lbs	In Racking System

Characteristics Options

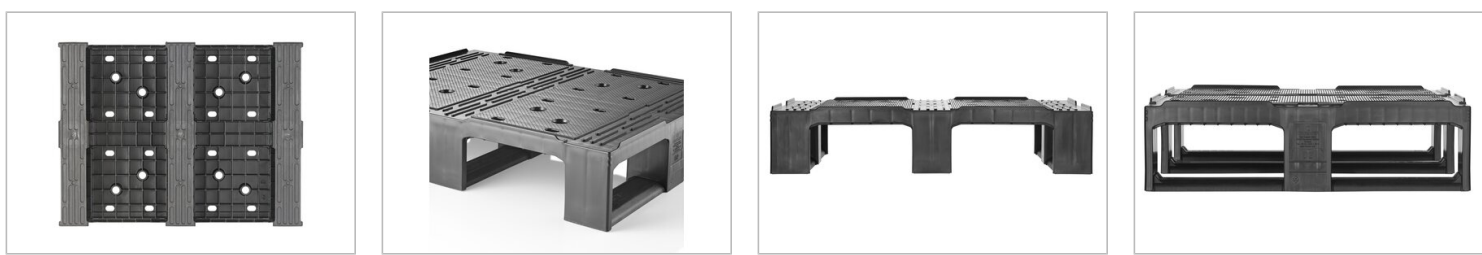
Color: black Runners: 3, unwelded Lips: 0.3" Temperature stability: 0 °F to 105 °F, short-term up to 200 °F	Lip options Antislip Lid
--	--------------------------------

Loading quantities (Pcs / Approximate amount)

Container	Container 20': 384 Container 40': 780	Container 40' High Cube: 880 Conventional trailer 45' high cube container: -
Truck	MEGA-Trailer: 1224	Jumbo: 1368

Labelling

Customized printing and numbering available on request depending on quantity. Position upon consultation.



*1 All technical data reflect characteristic features tested under specially defined conditions. Variations may occur due to different usage conditions, such as loading method, ambient temperature, and storage duration. All data and specifications are subject to change without notice. Our service team is happy to assist in reviewing the specific requirements of your individual application.
 *2 Our service team is available to provide precise information about material compositions.
 *3 **Static load:** Resistance to pressure on a flat surface with an evenly distributed load at a room temperature of approx. 68 °F.
Dynamic load: On a forklift with an evenly distributed load at a room temperature of approx. 68 °F.
In racking system: Evenly distributed load (sacks) along the longitudinal sides, resting on two supports for over 100 h at a room temperature of approx. 68 °F.