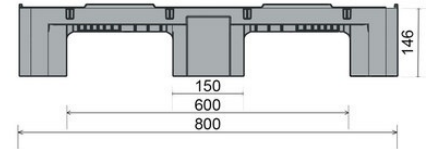
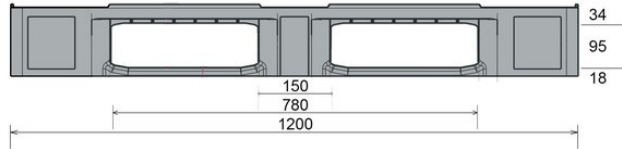









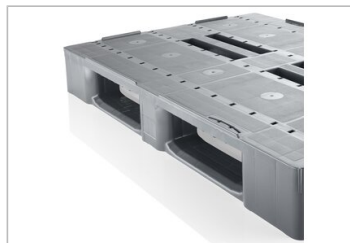
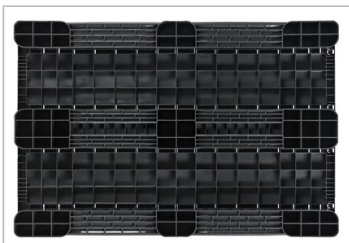
CS1

47.2" x 31.5"



Art.-Nr.: 83199801

Technical Data* ¹			
Dimensions L x W x H	47.2 x 31.5 x 5.7 " (1200 x 800 x 146 mm)		
Weight (lbs)	27.6 lbs		
Material* ²	PE		
Load capacity (lbs)	 Static 11000 lbs	 Dynamic 2200 lbs	 In Racking System 900 lbs
Characteristics		Options	
Color: basalt gray Runners: 3, unwelded Lips: 0.3 " Temperature stability: -22°F to +104°F, briefly up to +194°F		Transponder (RFID) Reinforcement profiles Lip options Welded runner Palgrip® anti-slip runners Lid	
Loading quantities (Pcs / Approximate amount)			
 Container	Container 20': 215 Container 40': 440	Container 40' High Cube: 465 Conventional trailer 45' high cube container: -	
 Truck	MEGA-Trailer: 627	Jumbo: 722	
Labelling			
Customized printing and numbering available on request depending on quantity. Position upon consultation.			



*1 All technical data reflect characteristic features tested under specially defined conditions. Variations may occur due to different usage conditions, such as loading method, ambient temperature, and storage duration. All data and specifications are subject to change without notice. Our service team is happy to assist in reviewing the specific requirements of your individual application.

*2 Our service team is available to provide precise information about material compositions.

*3 **Static load:** Resistance to pressure on a flat surface with an evenly distributed load at a room temperature of approx. 68°F.

Dynamic load: On a forklift with an evenly distributed load at a room temperature of approx. 68°F.

In racking system: Evenly distributed load (sacks) along the longitudinal sides, resting on two supports for over 100 h at a room temperature of approx. 68°F.