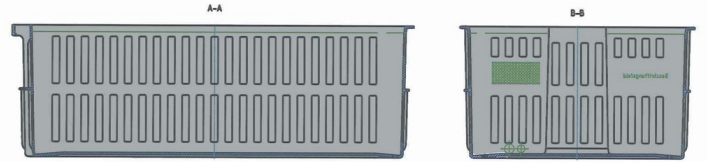








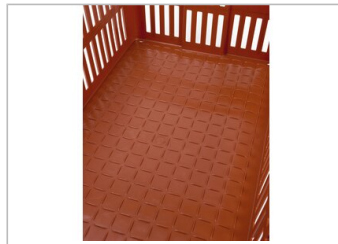
Poultry transport crates

90 l



Art.-Nr.: 81261710

Technical Data**1			
External Dimensions (mm)	840 x 495 x 295	Internal Dimensions (mm)	755 x 460 x 260
Weight (kg)	4,6 kg		
Volume (l)	90 l		
Material*2	PE		
Load capacity (kg)	 Holding Capacity 40kg	 Extra Load 310kg	
Stacking height (mm)	 When nested	 When stacked 280mm	
Characteristics		Options	
Colour: redbrown With door in the lid Stackable For temperatures ranging from -30 °C to +40 °C, briefly up to +90 °C Resistant to most chemicals and cleaning agents		-	
Loading quantities (Pcs / Approximate amount)			
On request			
Labelling			
Customised printing and numbering available on request depending on quantity. Position upon consultation.			



*1 All technical data include characteristic features, which have been tested under specially defined conditions. Varying data may result from different conditions of usage such as loading method, prevailing temperature and length of storage time. All data and specified information are subject to change without notice. Our service team is pleased to be at your disposal to check the special requirements of your individual application.

*2 Our service team is pleased to be at your disposal if you require exact information about material compositions.

*3 Holding capacity: at a room temperature of approx. 20 °C.