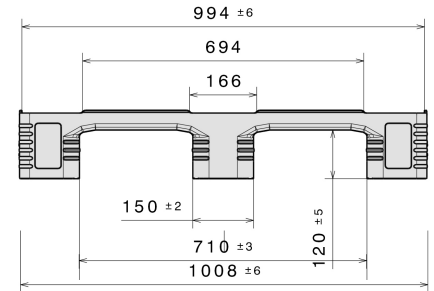
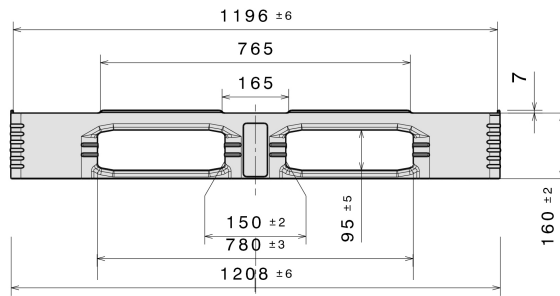




TC3

1200 X 1000 mm



Art.-Nr.: 87035251

Technical Data*1

Dimensions L x W x H (mm)	1200 x 1000 x 160 mm		
Weight (kg)	24,0 kg		
Material*2	PE		
Load capacity (kg)*3	Static 7500 kg	Dynamic 2000 kg	In Racking System 2000 kg

Characteristics	Options
Colour: black Runners: 3, unwelded Reinforcement profiles: 3 Rims: 7 mm Temperature stability: -30 °C to +40 °C, briefly up to +90 °C	Transponder (RFID) Rim options Lid

Loading quantities (Pcs / Approximate amount)

	Container	Truck
Container 20'	141	
Container 40'	300	
Container 40' High Cube	340	
Conventional trailer 45' high cube container		
MEGA-Trailer		468
Jumbo		504-540

Labelling

Customised printing and numbering available on request depending on quantity. Position upon consultation.



*1 All technical data include characteristic features, which have been tested under specially defined conditions. Varying data may result from different conditions of usage such as loading method, prevailing temperature and length of storage time. All data and specified information are subject to change without notice. Our service team is pleased to be at your disposal to check the special requirements of your individual application.

*2 Our service team is pleased to be at your disposal if you require exact information about material compositions.

*3 **Static load:** resistance to pressure on a flat ground surface and an evenly distributed load at a room temperature of approx. 20 °C.
Dynamic load: on a forklift with an evenly distributed load at a room temperature of approx. 20 °C.
In racking system: evenly distributed load (sacks) along the longitudinal sides. Resting on two supports for over 100 h at a room temperature of approx. 20 °C.