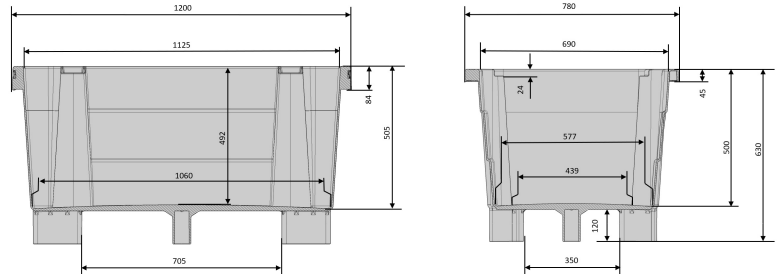






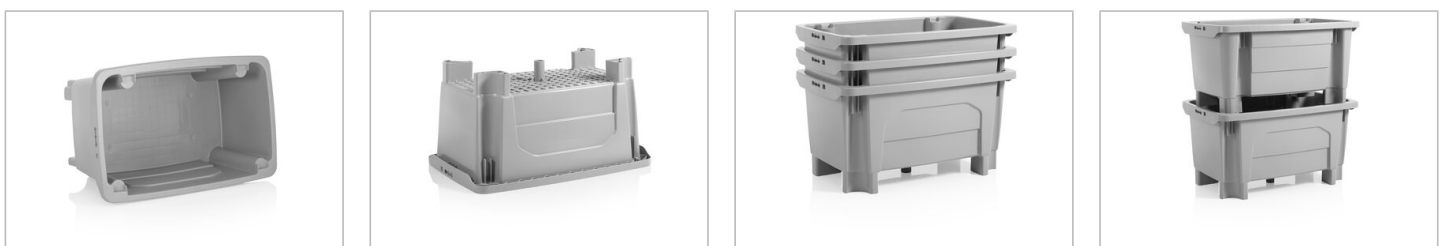
# Economic Transport box

300 l



Art.-Nr.: 81301810

Technical Data**1			
External Dimensions L x W x H (mm)	1200 x 780 x 630 mm	Internal Dimensions L x W x H (mm)	1125 x 690 x 505 mm
Weight (kg)	17.7 kg		
Nennvolumen (l) test 1	300 l		
Material**2	PE		
Load capacity (kg)	 <b>Holding Capacity</b> 250kg	 <b>Extra Load</b> 785kg	
Stacking height (mm)	 <b>When nested</b> 140mm	 <b>When stacked</b> 605mm	
Characteristics		Options	
Colour: light grey 5 feet Nestable, stackable For temperatures ranging from -30 °C to +40 °C, briefly up to +90 °C Resistant to most chemicals and cleaning agents Accessible with forklift and lift truck Food-safe. HACCP compliant		Transponder (RFID)	
Loading quantities (Pcs / Approximate amount)			
On request			
Labelling			
Customised printing and numbering available on request depending on quantity (except trolleys). Position upon consultation.			



\*1 All technical data include characteristic features, which have been tested under specially defined conditions. Varying data may result from different conditions of usage such as loading method, prevailing temperature and length of storage time. All data and specified information are subject to change without notice. Our service team is pleased to be at your disposal to check the special requirements of your individual application.

\*2 Our service team is pleased to be at your disposal if you require exact information about material compositions.

\*3 Holding capacity: at a room temperature of approx. 20 °C.