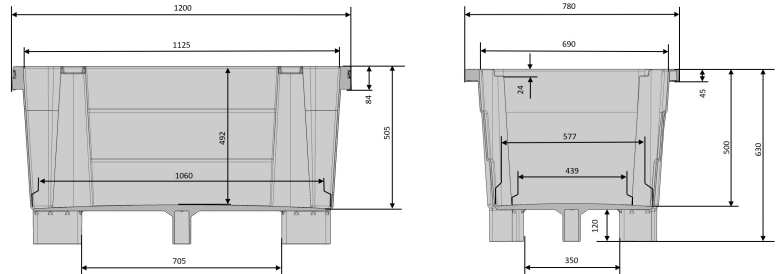






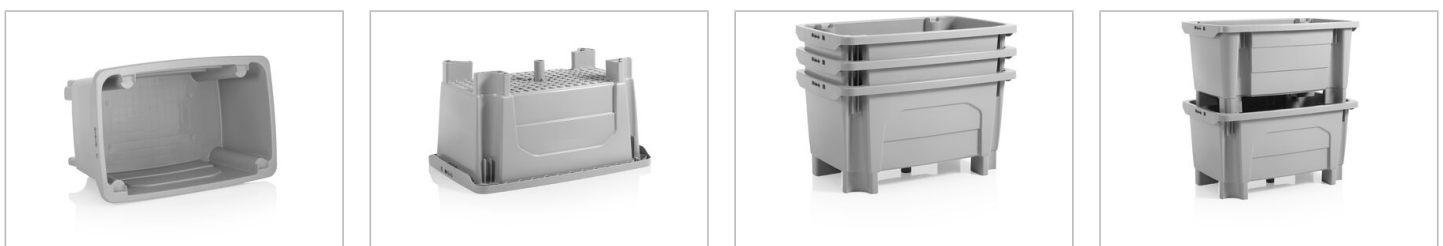
# Economic Transport box

300 l



Art.-Nr.: 81301810

| Technical Data**  |  |  |                     |
|---|--|--|---------------------|
| External Dimensions L x W x H (mm)  | 1200 x 780 x 630 mm  | Internal Dimensions L x W x H (mm)   | 1125 x 690 x 505 mm |
| Weight (kg)   | 17,7 kg  |  |                     |
| Volume (l)  | 300 l  |  |                     |
| Material*2  | PE   |  |                     |
| Load capacity (kg)*3  |  <b>Holding Capacity</b><br>250kg |  <b>Extra Load</b><br>785kg   |                     |
|   |  <b>When nested</b><br>140mm      |  <b>When stacked</b><br>605mm |                     |
| Characteristics   |  | Options  |                     |
| Colour: light grey<br>5 feet<br>Nestable, stackable<br>For temperatures ranging from -30 °C to +40 °C, briefly up to +90 °C<br>Resistant to most chemicals and cleaning agents<br>Accessible with forklift and lift truck<br>Food-safe. HACCP compliant |  | Transponder (RFID)   |                     |
| Loading quantities (Pcs / Approximate amount)   |  |  |                     |
| On request  |  |  |                     |
| Labelling   |  |  |                     |
| Customised printing and numbering available on request depending on quantity (except trolleys). Position upon consultation.   |  |  |                     |



\*1 All technical data include characteristic features, which have been tested under specially defined conditions. Varying data may result from different conditions of usage such as loading method, prevailing temperature and length of storage time. All data and specified information are subject to change without notice. Our service team is pleased to be at your disposal to check the special requirements of your individual application.

\*2 Our service team is pleased to be at your disposal if you require exact information about material compositions.

\*3 Load capacity: with a payload of 250 kg at a room temperature of approx. 20 °C.