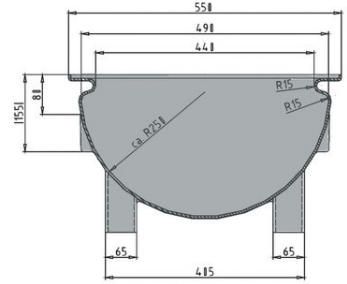
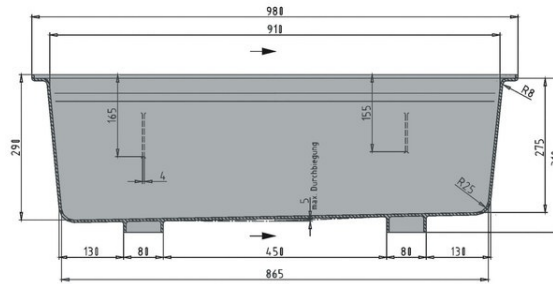




Trough

100 l



Art.-Nr.: 81301111

Characteristics

Colour: white
With feet
Easy grip all around the top
For temperatures ranging from -30 °C to +40 °C, briefly up to +90 °C
Resistant to most chemicals and cleaning agents
Food-safe. HACCP compliant

Options

Stand

Loading quantities (Pcs / Approximate amount)

On request

Labelling

Customised printing and numbering available on request depending on quantity (except stands). Position upon consultation.



*1 All technical data include characteristic features, which have been tested under specially defined conditions. Varying data may result from different conditions of usage such as loading method, prevailing temperature and length of storage time. All data and specified information are subject to change without notice. Our service team is pleased to be at your disposal to check the special requirements of your individual application.