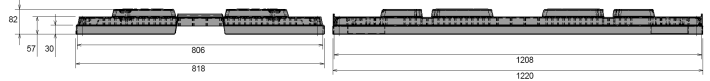




Pallet Lid 1200 x 800 mm



Art.-Nr.: 83292200

Technical Data^{*1}

External Dimensions L x W x H (mm)	1220 x 818 x 82 mm	Internal Dimensions L x W x H (mm)	1208 x 806 mm
Weight (kg)	5,5 kg		
Material ^{*2}	PE, ESD		
Nesting height	30 mm		

Characteristics

Colour: black
 Stackable
 Temperature stability: -30 °C to +40 °C, briefly up to +90 °C
 ESD lid
 Surface resistance of $\geq 1 \times 10^4 \text{ Ohm}$ to $< 1 \times 10^{11} \text{ Ohm}$

Options

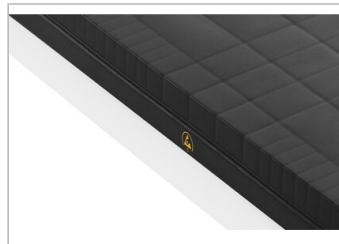
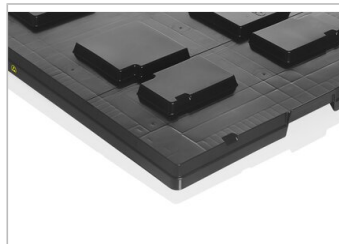
Transponder (RFID)

Loading quantities (Pcs / Approximate amount)

Guideline: 30 lids per pallet. Exact loading quantities on request.

Labelling

Hot stamping of letters and logos on request, depending on quantity. Position on long side.



^{*1} All technical data include characteristic features, which have been tested under specially defined conditions. Varying data may result from different conditions of usage such as loading method, prevailing temperature and length of storage time. All data and specified information are subject to change without notice. Our service team is pleased to be at your disposal to check the special requirements of your individual application.

^{*2} Our service team is pleased to be at your disposal if you require exact information about material compositions.