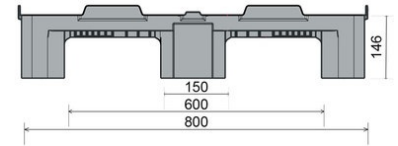
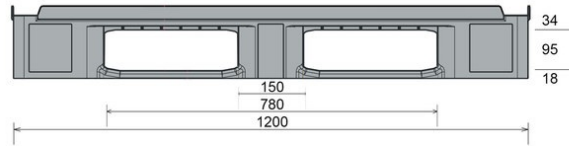




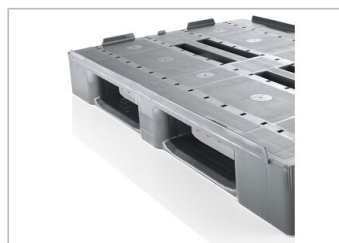
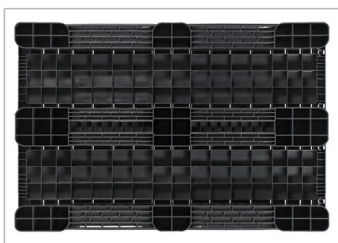
CS1

1200 x 800 mm



Art.-Nr.: 83199808

Technical Data*1			
Dimensions L x W x H (mm)	1200 x 800 x 146 mm		
Weight (kg)	13.0 kg		
Material*2	PE		
Load capacity (kg)*3	Static 5000 kg	Dynamic 1000 kg	In Racking System 400 kg
Characteristics		Options	
Colour: basalt grey Runners: 3, unwelded Rims: 22 mm outside Temperature stability: -30°C to +40°C, briefly up to +90°C		Transponder (RFID) Reinforcement profiles Rim options Welded runner Palgrip® anti-slip runners Lid	
Loading quantities (Pcs / Approximate amount)			
Container	Container 20': 215 Container 40': 440	Container 40' High Cube: 465 Conventional trailer 45' high cube container: -	
Truck	MEGA-Trailer: 627	Jumbo: 722	
Labelling			
Customised printing and numbering available on request depending on quantity. Position upon consultation.			



*1 All technical data include characteristic features, which have been tested under specially defined conditions. Varying data may result from different conditions of usage such as loading method, prevailing temperature and length of storage time. All data and specified information are subject to change without notice. Our service team is pleased to be at your disposal to check the special requirements of your individual application.

*2 Our service team is pleased to be at your disposal if you require exact information about material compositions.

*3 **Static load:** resistance to pressure on a flat ground surface and an evenly distributed load at a room temperature of approx. 20°C.

Dynamic load: on a forklift with an evenly distributed load at a room temperature of approx. 20°C.

In racking system: evenly distributed load (sacks) along the longitudinal sides. Resting on two supports for over 100 h at a room temperature of approx. 20°C.