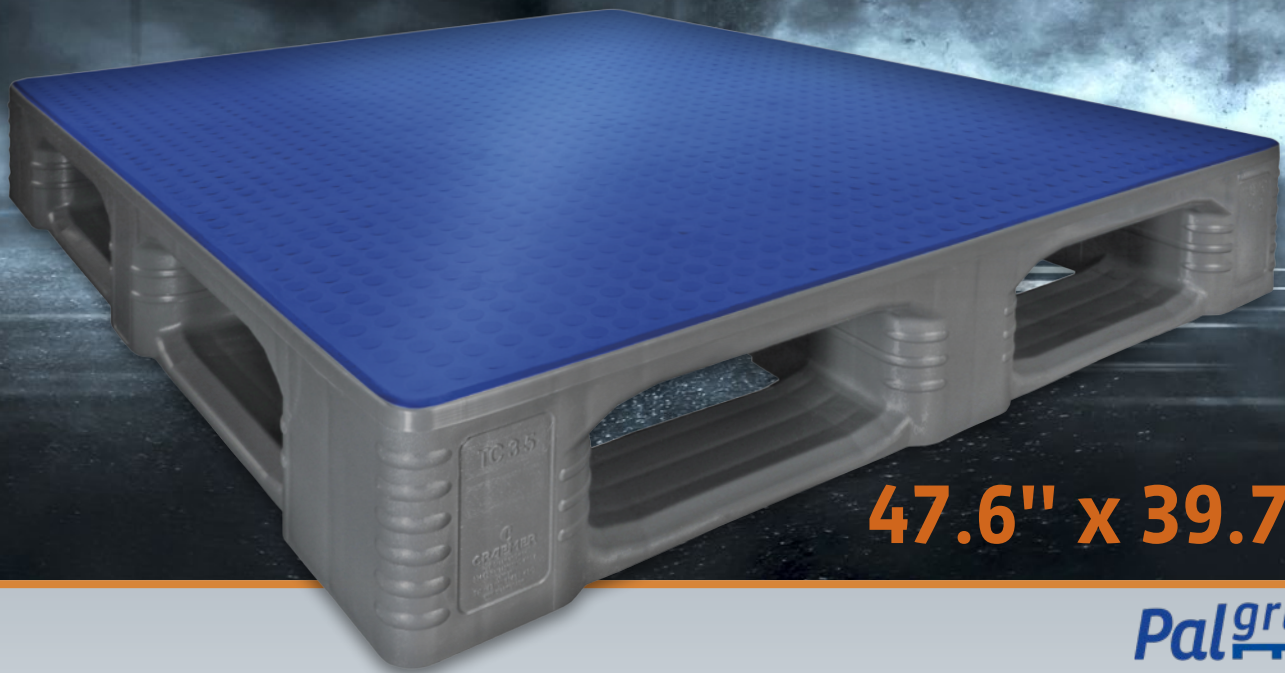


**NEW**



**SIMPLY THE BEST 1,200 x 1,000 mm**

**TC3-5**



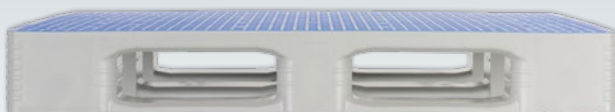
**47.6" x 39.7"**

**Palgrip**

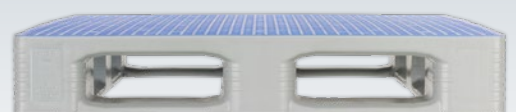
A CONTRIBUTION TO THE CIRCULAR ECONOMY

**REUSE & REDUCE WASTE**

**1,200**

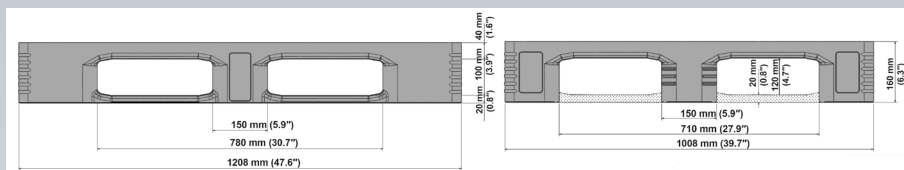


**1,000**



# TC3-5 Palgrip

## 1,200 x 1,000 mm



### Technical data<sup>\*1</sup>

Dimensions (in) L x W x H	47.6 x 39.7 x 6.3" (1200 x 1000 x 160 mm)	
Material <sup>*2</sup>	PE	
Weight (lb)	without steels rods 52 (23.5 kg)	with 5 steel rods 62 (28 kg)
Load capacities (lb) <sup>*3</sup>	<b>Static</b> 16500 (7500 kg) <b>Dynamic</b> 3300 (1500 kg) <b>In racking system</b> 2800 (1250 kg)	<b>Static</b> 16500 (7500 kg) <b>Dynamic</b> 4400 (2000 kg) <b>In racking system</b> 4400 (2000 kg)

### Characteristics

- Color: light grey / blue
- Palgrip® anti-slip top deck
- Runners: 5
- Reinforcement rods: 0 or 5
- Temperature stability (°F): -22 to +104, briefly up to 194

### Loading quantities (pcs/approx.)

Container	40' High Cube: <b>340</b>	Truck	Dry Van: <b>420</b>
-----------	---------------------------	-------	---------------------

### Labelling options

Customized printing and numbering available on request depending on quantity. Ask about label position options.

<sup>\*1</sup> All technical data include characteristic features, which have been tested under specially defined conditions. Varying data may result from different conditions of usage such as loading method, prevailing temperature and length of storage time. All data and specified information are subject to change without notice. Our service team is pleased to be at your disposal to check the special requirements of your individual application.

<sup>\*2</sup> Our service team is pleased to be at your disposal if you require exact information about material compositions.

<sup>\*3</sup> Load capacities refer to the equipment with 5 reinforcement rods.

**Static load:** resistance to pressure on a flat ground surface and an evenly distributed load at a room temperature of approx. 68 °F.

**Dynamic load:** on a forklift with an evenly distributed load at a room temperature of approx. 68 °F.

**In racking system:** evenly distributed load (sacks) along the longitudinal sides. Resting on two supports for over 100 hours at a room temperature of approx. 68 °F.



**Do you have questions or require further information? We are happy to advise you.**

**Germany (Headquarters Export Department)**  
**Craemer GmbH**  
 Broucker Straße 1  
 33442 Herzebrock-Clarholz | Germany  
 Tel.: +49 5245 43-0

**United States of America**  
**Craemer US Corporation**  
 30725 US HWY 19 N #304  
 Palm Harbor, FL 34684  
 Tel.: +1 (727) 312 8859

[www.craemer.com/us](http://www.craemer.com/us)

E-mail: [info@craemer.com](mailto:info@craemer.com)  
[www.craemer.com/en](http://www.craemer.com/en)

E-mail: [usa\\_office@craemer.com](mailto:usa_office@craemer.com)  
[www.craemer.com/us](http://www.craemer.com/us)

**Palgrip** These pallets belong to the Craemer Palgrip® pallet family.