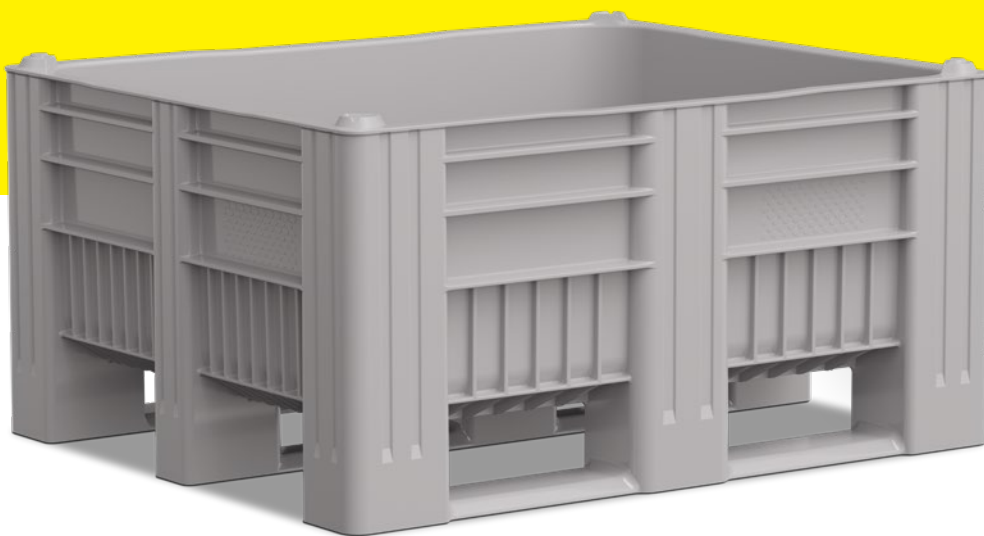
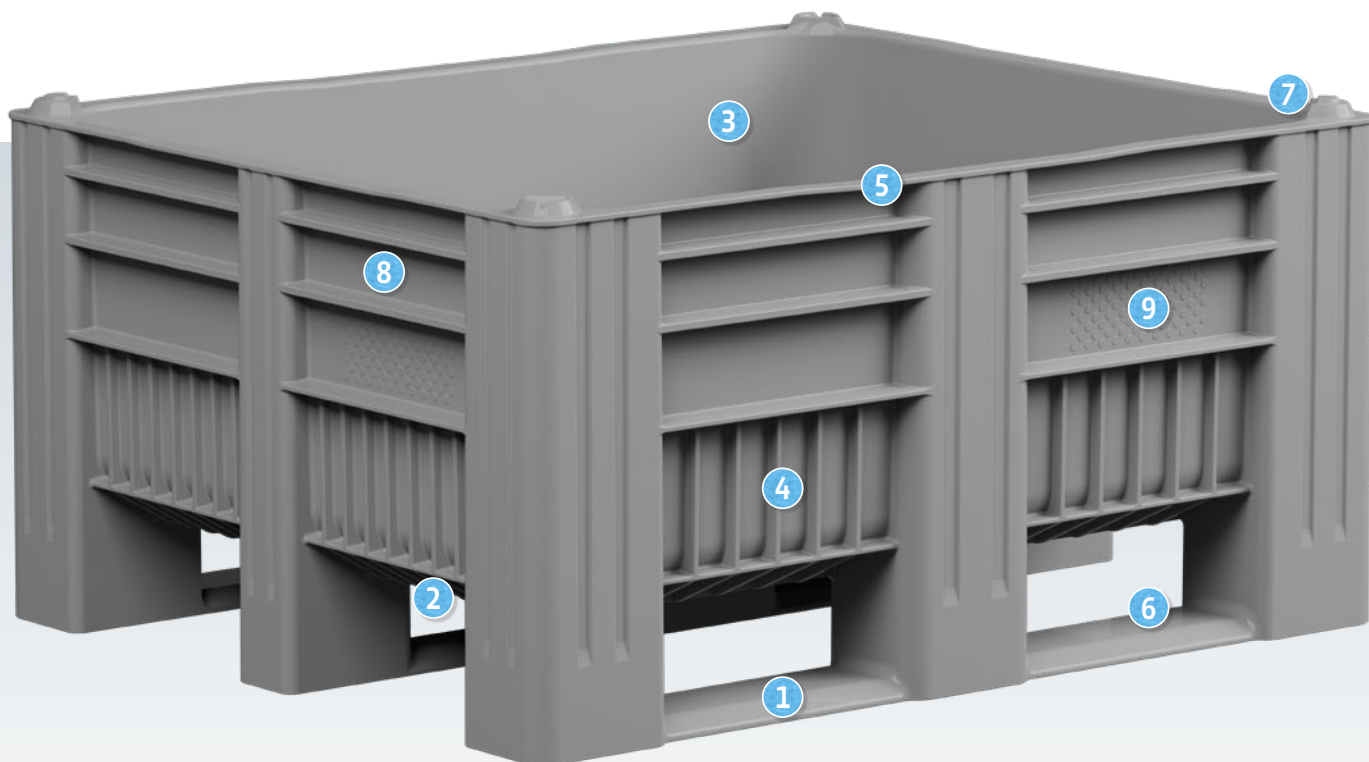


**FOR
SHORT
ARMS
AND
HEAVY
LOADS**



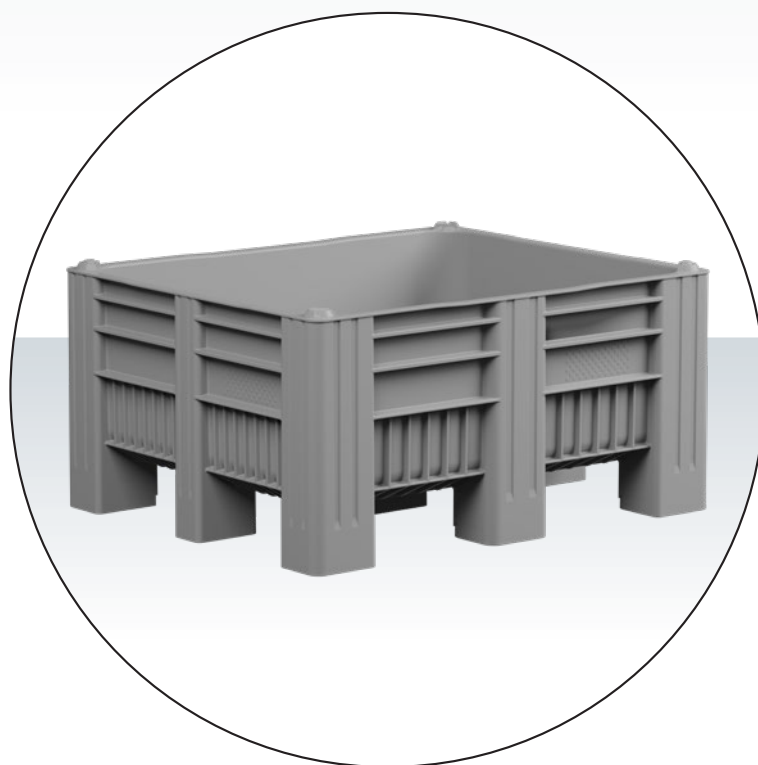
NEW! CB3 LOW

CB3 Low – extremely robust



Version with feet

On request, we also offer the CB3 Low with eight or nine feet.



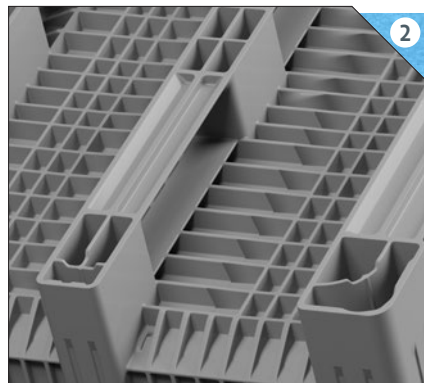
The CB3 Low is a compact, robust and practical pallet box. It provides clear storage and quick access to the contents while reliably protecting pressure-sensitive goods. Thanks to its reduced height and high resistance, it can be used for a variety of purposes, ranging from food and fish processing to metalworking and mechanical engineering.

This one-piece moulded box is made from high-quality, food-safe polyethylene and impresses with its sturdy construction and extremely resilient base, making it ideal for heavy-duty applications. Despite its high load capacity, it remains easy to handle.

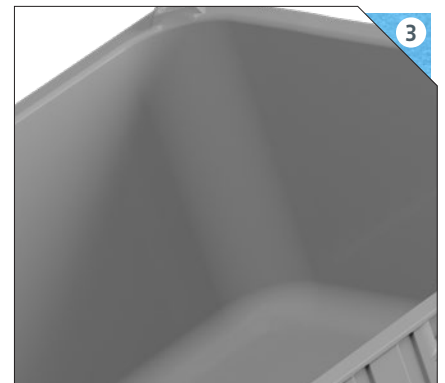
The CB3 Low is corrosion-free, easy to clean, fully recyclable and suitable for conveyor systems. Thanks to its dimensionally stable design, it guarantees secure protection and reliable stackability.



Produced in one piece with three moulded runners for a robust connection. Also available with eight or nine feet.



Close-meshed and high ribbing for an extremely robust and rigid floor.



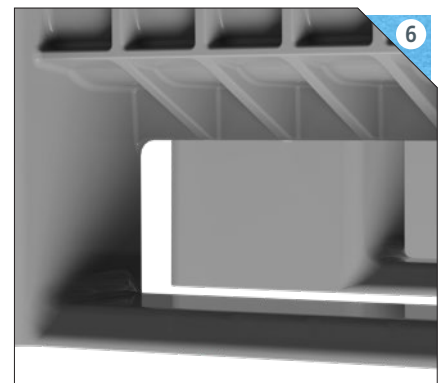
Smooth interior walls for easy emptying and cleaning



Ram protection through additional ribs on the sides, for increased resistance to forklift tines. Wide ribs for improved hygiene.



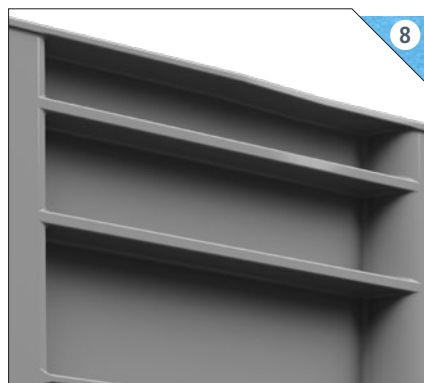
Offset at the edge for optimum force transmission via the column when handling heavy loads.



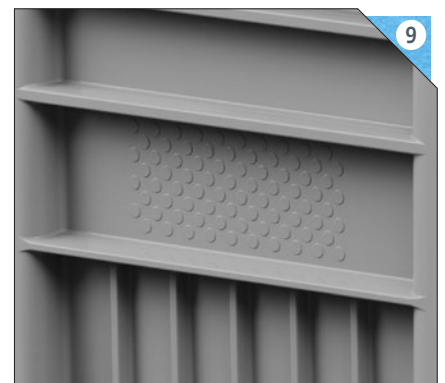
Chamfered runners and ribs facilitate handling and increase resistance.



Secure interlocking through integrated interlocking corners. Stackable with all other CB pallet boxes from Craemer.



Labelling fields for individual logos, lettering or numbering



Stippled area for easy attaching and removing of adhesive labels

Technical data* ¹	
External dimension L x W x H	1200 x 1000 x 580 mm
Material* ²	PE
Weight	~ 34.0 kg
Temperature stability	-30 °C to +40 °C, briefly up to +90 °C

Load Capacity* ³	
Extra Load	4500 kg
Holding Capacity	750 kg

*¹ All technical data include characteristic features, which have been tested under specially defined conditions. Varying data may result from different conditions of usage such as loading method, prevailing temperature and length of storage time. All data and specified information are subject to change without notice. Our service team is pleased to be at your disposal to check the special requirements of your individual application.

*² Our service team is pleased to be at your disposal if you require exact information about material compositions.

*³ Load capacity: with a payload of 750 kg at a room temperature of approx. 20 °C.

**Germany (Headquarters Export Department)
Craemer GmbH**

Brocke Straße 1
33442 Herzebrock-Clarholz | Deutschland

Phone: +49 5245 43-0
E-mail: info@craemer.com

**United Kingdom
Craemer UK Ltd**

Craemer House | Hortonwood 1
Telford, Shropshire TF1 7GN | United Kingdom

Phone: +44 1952 6078-00
E-mail: sales.uk@craemer.com

Craemer Group is one of the world's leading manufacturers of durable logistics solutions with more than 60 years of experience in plastics processing. The portfolio includes plastic pallets for a wide variety of requirements and a wide range of transport and storage containers – from stacking boxes, round containers and tubs to pallet boxes and large wheelie bins. All Craemer products are made of high-quality plastics (polyethylene or polypropylene) and excel with their tried and tested quality.