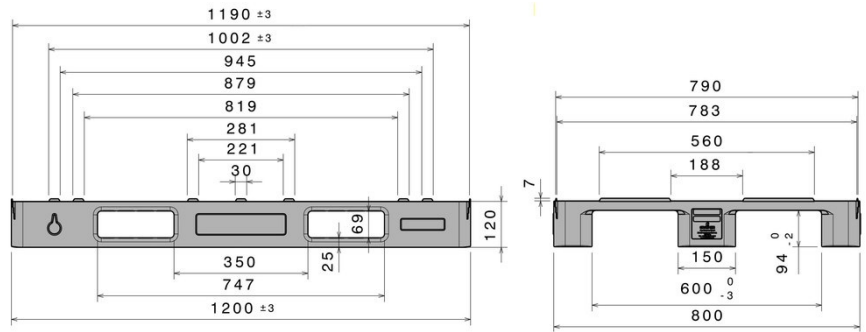


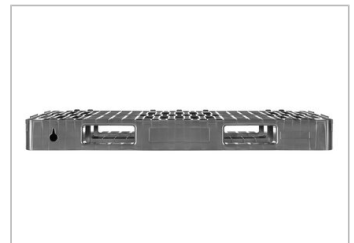
SL1

1200 x 800 mm



Art.-Nr.: 83259801

Technical data			
Dimensions L x W x H (mm)	1200 x 800 x 120		
Weight(kg)	7.0 kg		
Material	PE		
Load capacity (kg)	 Static 2000 kg	 Dynamic 1000 kg	 In Racking System -
Characteristics		Options	
Colour: basalt grey Runners: 3, unwelded Rims: 7 mm Temperature stability: -30 °C to +40 °C, briefly up to +90 °C		Rimoptions	
Loading quantities (Pcs / Approximate amount)			
 Container	Container 20': 248 Container 40': 504		Container 40' High Cube: 558 Conventional trailer 45' high cube container: 680
 Truck	MEGA-Trailer: 816		Jumbo: 912
Labelling			
Customised printing and numbering available on request depending on quantity. Position upon consultation.			



- *1 All technical data include characteristic features, which have been tested under specially defined conditions. Varying data may result from different conditions of usage such as loading method, prevailing temperature and length of storage time. All data and specified information are subject to change without notice. Our service team is pleased to be at your disposal to check the special requirements of your individual application.
- *2 Our service team is pleased to be at your disposal if you require exact information about material compositions.
- *3 **Static load:** resistance to pressure on a flat ground surface and an evenly distributed load at a room temperature of approx. 20 °C.
Dynamic load: on a forklift with an evenly distributed load at a room temperature of approx. 20 °C.
In racking system: evenly distributed load (sacks) along the longitudinal sides. Resting on two supports for over 100 h at a room temperature of approx. 20 °C.