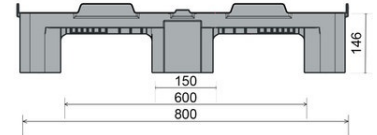
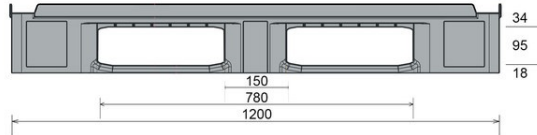




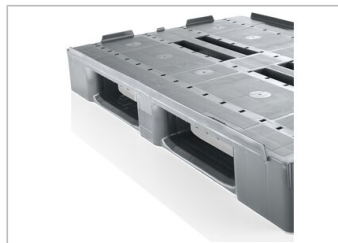
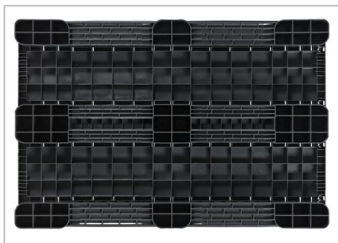
CS₁

1200 x 800 mm



Art.-Nr.: 83199808

Technical data			
Dimensions L x W x H (mm)	1200 x 800 x 146		
Weight(kg)	13.0 kg		
Material	PE		
Load capacity (kg)	 Static 5000 kg	 Dynamic 1000	 In Racking System 400
Characteristics		Options	
Colour: basalt grey Runners: 3, unwelded Rims: 22 mm outside Temperature stability: -30 °C to +40 °C, briefly up to +90 °C		Transponder (RFID) Reinforcement profiles Rimoptions Welded runner Palgrip® anti-slip runners	
Loading quantities (Pcs / Approximate amount)			
 Container	Container 20': 215 Container 40': 440		Container 40' High Cube: 465 Conventional trailer 45' high cube container: 528
 Truck	MEGA-Trailer: 627		Jumbo: 722
Labelling			
Customised printing and numbering available on request depending on quantity. Position upon consultation.			



*1 All technical data include characteristic features, which have been tested under specially defined conditions. Varying data may result from different conditions of usage such as loading method, prevailing temperature and length of storage time. All data and specified information are subject to change without notice. Our service team is pleased to be at your disposal to check the special requirements of your individual application.

*2 Our service team is pleased to be at your disposal if you require exact information about material compositions.

*3 **Static load:** resistance to pressure on a flat ground surface and an evenly distributed load at a room temperature of approx. 20 °C.

Dynamic load: on a forklift with an evenly distributed load at a room temperature of approx. 20 °C.

In racking system: evenly distributed load (sacks) along the longitudinal sides. Resting on two supports for over 100 h at a room temperature of approx. 20 °C.