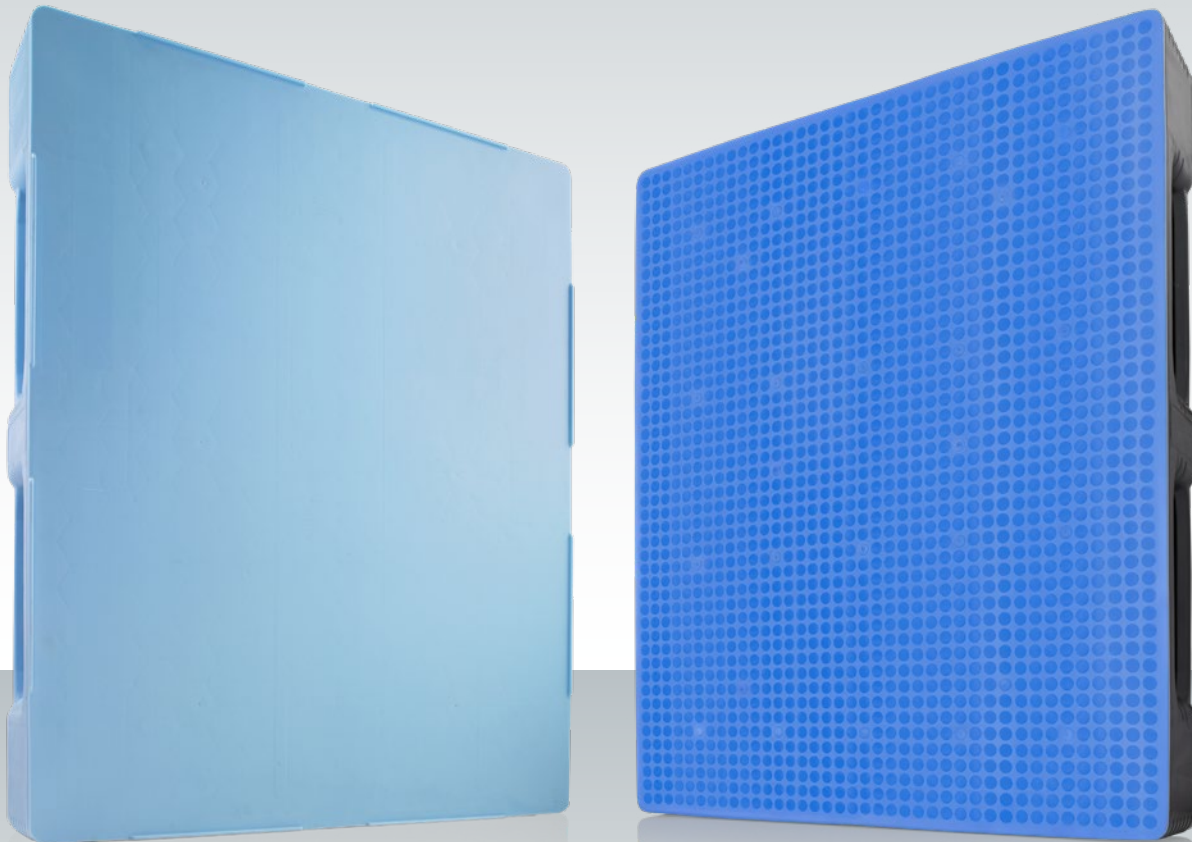
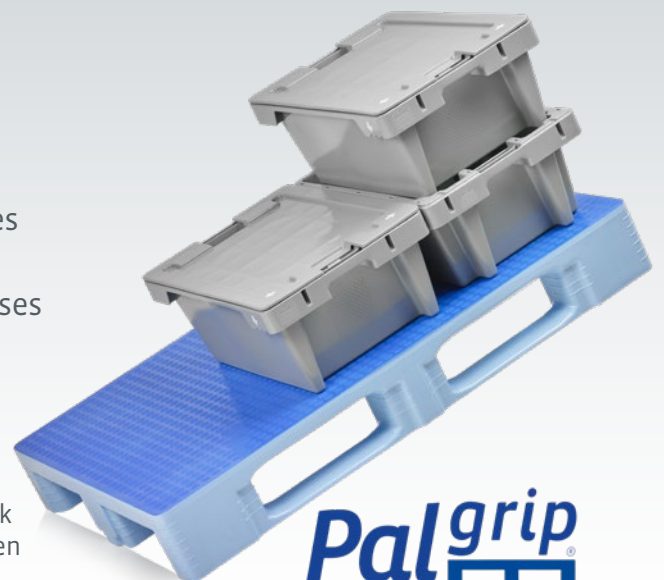


TC3-5 Totally Closed

Permanently Completely Closed Plastic Pallet

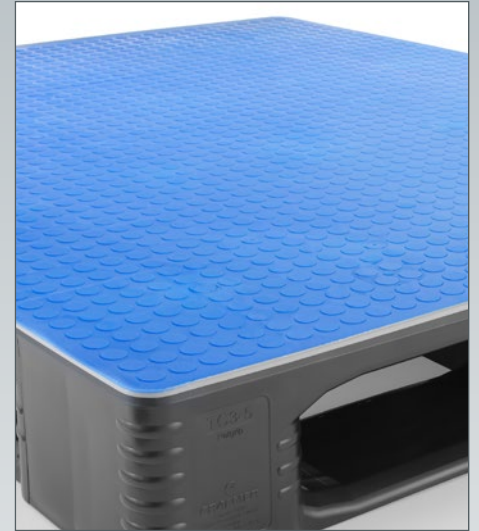
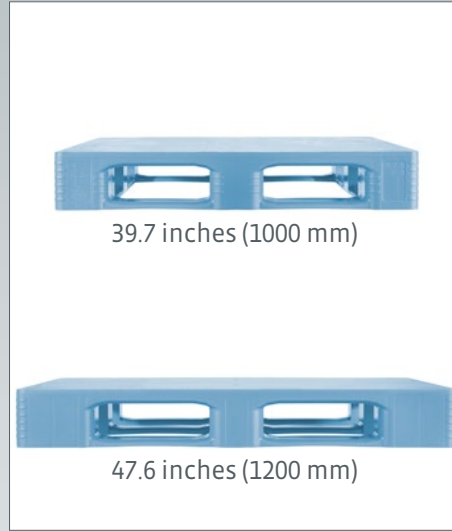


- Manufactured from pure PE, one-piece design
- Patented welding seam geometry for maximum impact resistance and breaking strength
- Flat and solid deck style
- Full-surface Palgrip® anti-slip top deck optionally available
- Four-way entry, chamfered openings on both sides of the runners
- Hygienic pallet, easy to clean, no cavities or recesses
- High load bearing capacity in heavy duty areas, rackable and stackable



Unique, full-surface Palgrip® anti-slip top deck for total slip resistance, securing the load even in damp conditions or inclined positions.

Palgrip



Technical data*¹

Dimensions L x W x H * ²	47.6" x 39.7" x 6.3" (1200 x 1000 x 160 mm)		
Material * ³	PE		
Load capacities * ⁴	 Static	 Dynamic	 In racking system
without reinforcement rods	16500 lbs (7500 kg)	3300 lbs (1500 kg)	2800 lbs (1250 kg)
with 5 reinforcement rods	16500 lbs (7500 kg)	4400 lbs (2000 kg)	4400 lbs (2000 kg)

Characteristics

- Colors: light blue, black
- Runners: 5, unwelded
- Reinforcement rods: 0 or 5
- Temperature stability (°F): -22 to +104, briefly up to 194

Options

- Palgrip® anti-slip top deck
- RFID Transponder
- Customized printing and numbering

*¹ All technical data include characteristic features, which have been tested under specially defined conditions. Varying data may result from different conditions of usage such as loading method, prevailing temperature and length of storage time. All data and specified information are subject to change without notice. Our service team is pleased to be at your disposal to check the special requirements of your individual application.

*² All measurements and weight indications are conversion values derived from the original metric values. The possible range of tolerance can be found in the technical drawing. All tolerances are within the accepted tolerance range as specified in the respective DIN norm. If you require more information on our tolerances please contact our sales team.

*³ Our service team is pleased to be at your disposal if you require exact information about material compositions.

*⁴ Static load: resistance to pressure on a flat ground surface and an evenly distributed load at a room temperature of approx. 68 °F.
Dynamic load: on a forklift with an evenly distributed load at a room temperature of approx. 68 °F.
In racking system: evenly distributed load (sacks) along the longitudinal sides. Resting on two supports for over 100 hours at a room temperature of approx. 68 °F.

Do you have questions or require further information? We are happy to advise you.

Germany (Headquarters Export Department)
Craemer GmbH
 Brocker Straße 1
 33442 Herzebrock-Clarholz | Germany
 Tel.: +49 5245 43-0

United States of America
Craemer US Corporation
 30725 US HWY 19 N #304
 Palm Harbor, FL 34684
 Tel: +1 (727) 312 8859

www.craemer.com/us

E-mail: info@craemer.com
www.craemer.com/en

E-mail: usa_office@craemer.com
www.craemer.com/us