



## Logistics in construction



# Why plastic load carriers?

Compared to other materials, plastic offers a wide range of advantages. Plastic products from Craemer combine all these and more: The relatively low dead weight of these products make everyday handling easy. At the same time, they impress with their high resistance and durability as well as a long service life – thanks to their single-mould production and their stable construction.

The weather is not an issue: Plastic products from Craemer withstand every season. The pallets and containers made of high-quality polyethylene are absolutely weatherproof and break-resistant – even over many years. Their seamless construction and smooth surfaces also ensure easy cleaning and drying. Dedicated fields for prints provide space for individually stamped logos, lettering or numbering; special colours are available on request.

## Ready Mortar Skip FMK



- 5 years TÜV approval
- Lettering possible from 25 pieces
- High breaking strength even at low temperatures

**200 l**  
990 × 665 × 490 mm  
Payload: 700 kg  
Weight: 17 kg  
Colours: ■ ■ ■



## Mortar Tub D-SMK



- 5 years TÜV approval (TÜV certification refers to the D-SMK 90 l with frame)
- Lettering possible from 50 pieces

**Mortar Tub with frame 90 l**  
Ø 628 × 385 mm  
Payload: 250 kg  
Weight: 7.3 kg  
Colour: ■

**Mortar Tub without frame 90 l**  
Ø 628 × 385 mm  
Weight: 3.3 kg  
Colour: ■



## Mortar Box



**Mortar Box/Transport Box 80 l**  
760 × 500 × 320 mm  
Weight: 3.5 kg  
Colours: ■ ■ ■

## Bucket



**Bucket 20 l**  
Ø 380 × 280 mm  
Weight: 1.3 kg  
Colours: ■ ■

**Bucket 30 l**  
Ø 380 × 420 mm  
Weight: 1.8 kg  
Colours: ■ ■

## Pallets

- 100 percent weatherproof
- High safety level due to consistent quality

### For light loads



**CS1**  
1200 × 800 × 150 mm  
Load capacity<sup>(1)</sup>  
• static: 5000 kg  
• dynamic: 1000 kg  
• in high rack: 400 kg  
Weight: 12.5 kg

### For heavy loads



**CR1**  
1200 × 800 × 160 mm  
Load capacity<sup>(2)</sup>  
• static: 7500 kg  
• dynamic: 1750 kg  
• in high rack: 1750 kg  
Weight: 19.0 kg



**CR3/CR3-5**  
1200 × 1000 × 160 mm  
Load capacity<sup>(1)</sup>  
• static: 5000 kg  
• dynamic: 1250 kg  
• in high rack: 1000 kg  
Weight: 21.5 kg

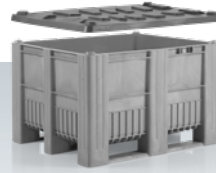
## Pallet Boxes

- Corrosion-free (polyethylene)
- High payload with low dead weight

### For rough applications



**CB1 470 I**  
1200 × 800 × 740 mm  
Payload: 700 kg  
Stacking load: 5000 kg  
Dynamic load: 1200 kg  
Weight: 34.5 kg  
Colours: ■ ■ ■ ■ ■ ■ ■ ■ ■ ■



**CB3 610 I**  
1200 × 1000 × 740 mm  
Payload: 700 kg  
Stacking load: 5000 kg  
Dynamic load: 1200 kg  
Weight: 36.5 kg  
Colours: ■ ■ ■ ■ ■ ■ ■ ■ ■ ■

### For large volumes



**CB3 High 1000 I**  
1200 × 1000 × 1140 mm  
Payload: 1000 kg  
Stacking load: 4000 kg  
Dynamic load: 1500 kg  
Weight: 49 kg  
Colour: ■

### For heavy loads

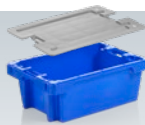


**SB3 610 I**  
1200 × 1000 × 790 mm  
Payload: 700 kg  
Stacking load: 5000 kg  
Dynamic load: 1200 kg  
Weight: 42.5 kg  
Colour: ■

## Storage Containers

- Durable
- Highly flexible use

### For space-saving transport



**Stack & Nest Box 32 I**  
Accessories: Lid  
600 × 400 × 225 mm  
Weight: 2.1 kg  
Colours: ■ ■



**Stack & Nest Container 300 I**  
1200 × 780 × 630 mm  
Weight: 17.7 kg  
Colour: ■

### For safe storage (lockable)



**Universal Container 210 I**  
Accessories: Lid or hinged lid  
790 × 605 × 685 mm  
with lid 775 mm  
Weight: 8.9 kg  
Colours: ■ ■



**Universal Container 400 I**  
Accessories: Lid or hinged lid  
945 × 725 × 830 mm  
with lid 930 mm  
Weight: 17.4 kg  
Colours: ■ ■

## Round Containers

- Break-proof
- Dimensionally stable

### For mixing and blending



**Bin 40 I**  
Accessories: Lid, trolley  
Ø 420 × 445 mm  
Weight: 1.7 kg  
Colour: □



**Bin 50 I**  
Accessories: Lid, trolley  
Ø 420 × 540 mm  
Weight: 2 kg  
Colour: □



**Bin 75 I**  
Accessories: Lid or snap-on lid, trolley  
Ø 515 × 530 mm  
Weight: 3.7 kg  
Colour: □



**Bin 110 I**  
Accessories: Lid or snap-on lid, trolley  
Ø 515 × 733 mm  
Weight: 5.5 kg  
Colour: □

<sup>(1)</sup>without reinforcement profiles

<sup>(2)</sup>with reinforcement profiles



**Craemer GmbH**

Brocke Straße 1  
33442 Herzebrock-Clarholz | Germany

Tel.: +49 5245 43-0

E-mail: [info@craemer.com](mailto:info@craemer.com)

The Craemer Group is one of the world's leading manufacturers of durable logistics solutions with more than 50 years of experience in plastics processing. The portfolio includes plastic pallets for a wide variety of requirements and a wide range of transport and storage containers – from stacking boxes, round containers and tubs to pallet boxes and large wheelie bins (MGB type). All Craemer products are made of high-quality polyethylene and excel with their tried and tested quality.