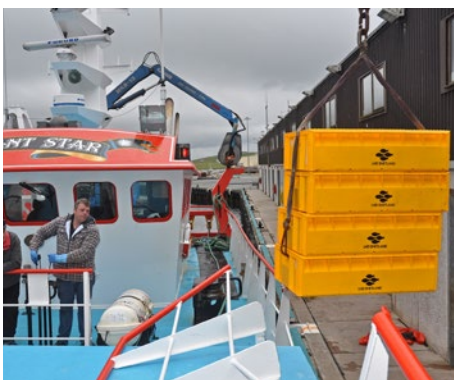




At sea
and on
shore

Fish Boxes, Containers and Plastic Pallets

for the Fishing Industry



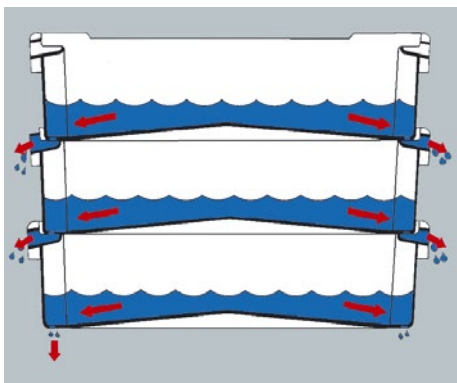
Quality Boxes Mean Quality Fish

Durable, reliable & adaptable

The fishing industry depends on the reliability and quality of many factors: from the fishing vessel and the crew to the processing and logistics systems on land and at sea. Craemer fish boxes have been a vital part and essential guarantor for smooth operations in this process chain for over 50 years.

Craemer fish boxes are injection-moulded from pure, food-safe polyethylene and meet all the technical and hygienic requirements of the international fishing industry. Thanks to their high impact resistance and excellent load-bearing capacity, the fish boxes are ideal for a wide range of applications – from fishing to processing to trading. The innovative box design allows space-saving nesting and stacking, thus significantly reducing freight costs.

Craemer continuously responds to the ever-changing market requirements with innovations. Examples for fish boxes are the unique melt water drainage system with lateral water drainage to the front, the optimised base geometry preventing water accumulation after washing or the integrated and patented RFID transponder solution.



Specially designed Craemer melt water drainage system

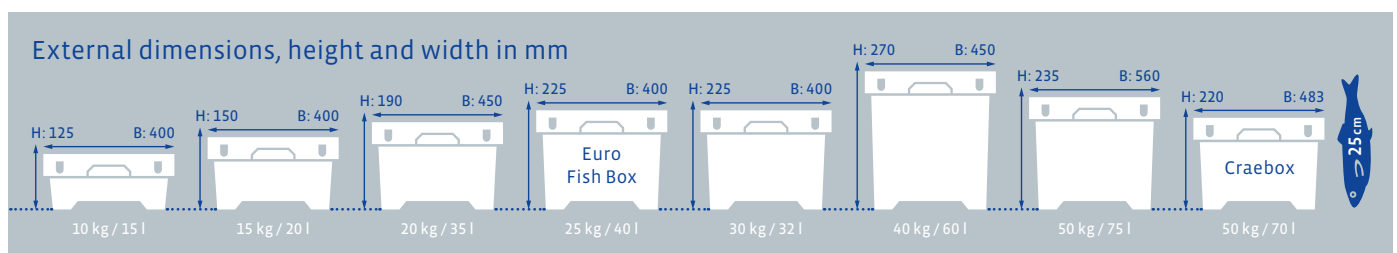


Traceability via RFID (UHF) transponder



Characteristics:

- Hygienic and easy to clean with jetwash or machine wash
- Specially designed Craemer melt water drainage system
- Nestable and stackable
- High load bearing capacity and impact strength
- For temperatures ranging from -30° to +40°C, briefly up to +90°C
- Optimised base geometry with drainage holes (also available without base perforation)
- Arrow-marking as visual aid for nesting and stacking



Fish Boxes



**Stack & Nest Box /
Fillet Box 10 kg / 15 l**
600 × 400 × 125 mm
Standard colours: ■



**Stack & Nest Box /
Fillet Box 15 kg / 20 l**
600 × 400 × 150 mm
Standard colours: ■



**Stack & Nest Box /
Fish Box 30 kg / 32 l**
Accessories: Lid
600 × 400 × 225 mm
Standard colours: ■■



**Stack & Nest Box /
Fish Box 20 kg / 35 l**
800 × 450 × 190 mm
Standard colours: ■□



**Stack & Nest Box /
Euro Fish Box
25 kg / 40 l**
Accessories: Lid
800 × 400 × 225 mm
Standard colours: ■□

Fish Boxes



**Stack & Nest Box /
Fish Box 40 kg / 60 l**
800 × 450 × 270 mm
Standard colours: ■□



**Stack & Nest Box /
Fish Box 50 kg / 75 l**
890 × 560 × 235 mm
Standard colours: ■□



Craebox 50 kg / 70 l
813 × 483 × 220 mm
Standard colours: □

Additional Craemer Equipment for the Fishing Industry

Plastic Containers



Stack & Nest Container 300 l
1200 × 780 × 630 mm
Standard colours: ■



Bin 40 l
Accessories:
Lid, trolley
Ø 420 × 445 mm
Standard colours: □



Bin 50 l
Accessories:
Lid, trolley
Ø 420 × 540 mm
Standard colours: □



Bin 75 l
Accessories:
Lid or snap-on lid,
trolley
Ø 515 × 530 mm
Standard colours: □

They meet all requirements for stability, easy handling and durability. Their long service life is guaranteed by the use of high-quality, UV-resistant PE. The 300 l Container is nestable and stackable. Other large containers are available in 210 l and 400 l sizes. Solid and liquid substances can be safely stored and transported in these thick-walled durable bins.

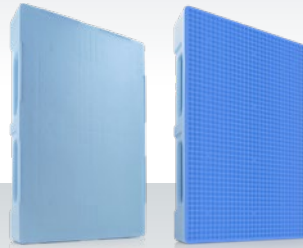
Additional Craemer Equipment for the Fishing Industry

Plastic Pallets



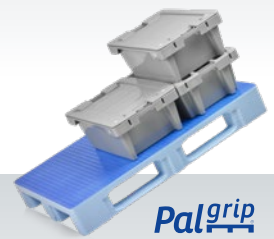
H1 – Open Hygienic Plastic Pallets
1200 × 800 × 160 mm

Craemer's H1 Euro pallet with 11 mm rim was specifically designed for the fishing industry. Combined with the Euro fish boxes, this robust and reliable Euro pallet forms a reusable system with excellent cleaning properties.



TC1 / TC3 / TC3-5 – Closed Hygienic Plastic Pallets
1200 × 800 × 160 mm / 1200 × 1000 × 160 mm

The TC, optionally available with full-surface Palgrip® anti-slip top deck, boasts a patented welding seam geometry with high impact resistance and is thus ideal for heavy duty loads. Contamination is almost impossible thanks to its „Totally Closed“ design.



Pallet Boxes



CB1 470 I
1200 × 800 × 740 mm
Standard colours: ■ ■ ■ ■ ■ ■ ■ ■



CB3 610 I
1200 × 1000 × 740 mm
Standard colours: ■ ■ ■ ■ ■ ■ ■ ■



CB3 High ~1000 I
3 runners or 9 feet
1200 × 1000 × 1140 mm
Standard colours: ■ ■ ■ ■ ■ ■ ■ ■



HB3 580 I
1200 × 1000 × 790 mm
Standard colours: ■ ■ ■ ■ ■ ■ ■ ■



SB3 610 I
3 runners or 9 feet
Solid or fully perforated walls / base
1200 × 1000 × 790 mm
Standard colours: ■ ■ ■ ■ ■ ■ ■ ■

Craemer Pallet Boxes are the ideal solution for transport and storage processes in the fishing industry. Thanks to their sturdy construction, they boast with high resistance and durability. The smooth interior walls allow easy emptying and cleaning as well as quick drying. Custom-fit lids are available as additional equipment.

Do you have further questions or require detailed information? We look forward to your call / message.

Germany (Headquarters Export Department)
Craemer GmbH
Brockner Straße 1
33442 Herzebrock-Clarholz | Germany
Tel.: +49 5245 43-0
E-mail: info@craemer.com

United Kingdom
Craemer UK Ltd
Craemer House | Hortonwood 1
Telford, Shropshire TF1 7GN | United Kingdom
Tel: +44 1952 6078-00 | Fax: +44 1952 6078-01
E-mail: info@craemer.com

Craemer Group is one of the world's leading manufacturers of durable logistics solutions with more than 60 years of experience in plastics processing. The portfolio includes plastic pallets for a wide variety of requirements and a wide range of transport and storage containers – from stacking boxes, round containers and tubs to pallet boxes as well as wheelie bins MGB typ (The acronym "MGB" is a standard European waste industry term used to describe a mobile garbage bin / wheelie bin). All Craemer products are made of high-quality polyethylene and excel with their tried and tested quality.

www.craemer.com

www.craemer.co.uk