

Product Overview

Reliable solutions for all industries



Plastic Pallets

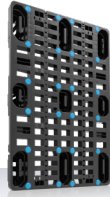
Product range for efficient pallet logistics

NP Pallet

Robust and nestable

- Robust construction, particularly durable
- High volume reduction in stacking
- Easy de-nesting without physical effort

- Options: - Rims
- Reinforcement profiles
- Anti-slip pads (upper deck)
- Anti-slip plugs (lower deck)



NP1
1200 × 800 × 146 mm
Standard colours: ■

SL Pallet

Robust and lightweight

- Single shot moulded
- Three runner pallet with low weight
- Height of only 120 mm

- Options: - Rims



SL1
1200 × 800 × 120 mm
Standard colours: ■

D Pallets

From light weight to heavy duty loads

- Excellent price/performance ratio
- Variety of options
- D2: a real alternative to the Dusseldorf pallet

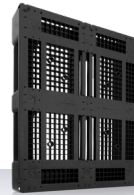
- Options: - Rims
- Reinforcement profiles
- Anti-slip plugs



D2
800 × 600 × 160 mm
Standard colours: ■



D1
1200 × 800 × 150 mm
Standard colours: ■



D3/D3-5
1200 × 1000 × 150 mm
Standard colours: ■

CS Pallets

Multi-talented across many industries

- Ideal for bagged goods, cardboard packaging and other packed goods
- Combines numerous proven product features
- Variety of equipment options

- Options: - Rims
- Reinforcement profiles
- Welded runners



CS1
1200 × 800 × 150 mm
Standard colours: ■



CS3
1200 × 1000 × 150 mm
Standard colours: ■

H Pallets

A benchmark in hygiene

- Europe's No.1 hygiene pallet with welded runners
- Standard in the meat industry for more than 20 years
- EURO H1: only plastic pallet with comprehensive exchangeability
- Black version: with unwelded runners, ideal for medium loads in non-food areas

- Options: - Rims



H2
800 × 600 × 160 mm
Standard colours: ■



EURO H1
with central box retainers
1200 × 800 × 160 mm
Standard colours: ■



H1
1200 × 800 × 160 mm
Standard colours: ■ ■



H3
1200 × 1000 × 160 mm
Standard colours: ■ ■

CR Pallets

Maximum performance in premium quality

- Bestselling pallet with RFID technology
- Best quality for complex applications
- Ideally suited for high rack warehouses and automated processes

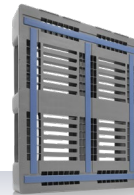
- Options: - Rims
- Reinforcement profiles



CR2
800 × 600 × 160 mm
Standard colours: ■



CR1
1200 × 800 × 160 mm
Standard colours: ■ ■ ■



CR3/CR3-5
1200 × 1000 × 160 mm
Standard colours: ■ ■ ■ ■



CR4/CR4-5
48 × 40 × 5.9"
(1219 × 1016 × 150 mm)
Standard colours: ■ ■

Palgrip Craemer plastic pallets are available with Palgrip® anti-slip coating on the top deck and / or under the runners as standard or optionally.

RFID Equipping Craemer plastic pallets with RFID transponders (UHF, HF) turns them into information carriers with huge potential for the entire supply chain.

ESD The material used for Craemer ESD pallets is modified with additives, offering reliable protection and making them an ideal supplement for conductive boxes.

TC Pallets

The benchmark in the closed pallet market

- Totally Closed – permanently completely closed for heavy duty applications
- Patented welding geometry
- Heavy duty hygiene pallet
- Compatible with all closed pallets in the market

- Options*: - Rims
- Reinforcement profiles



TC1
1200 × 800 × 160 mm
Standard colours: ■ ■ ■ ■ ■



TC1 Palgrip®
1200 × 800 × 160 mm
Standard colours: ■ ■ ■ ■ ■



TC3/TC3-5
1200 × 1000 × 160 mm
Standard colours: ■ ■ ■ ■ ■



TC3/TC3-5 Palgrip®
1200 × 1000 × 160 mm
Standard colours: ■ ■ ■ ■ ■

A Pallets

Perfect for automation

- Ideal for intralogistics processes
- Compatible with new and old systems
- Identical in construction to a wooden Euro pallet

- Optionen* - Rims
- Reinforcement profiles
- Anti-slip plugs (lower deck)



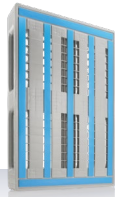
A1
1200 × 800 × 150 mm
Standard colours: ■

L Pallets

The ultimate logistics plastic pallet

- Ideal for intralogistics processes
- Compatible with new and old systems
- EURO L1*: identical in construction to a wooden Euro pallet

- Options*: - Rims
- Reinforcement profiles



EURO L1*
1200 × 800 × 150 mm
Standard colours: ■



L3*
1200 × 1000 × 160 mm
Standard colours: ■

Pallet Lids

Stackable and precise fit

- Suitable for use with all standard reusable boxes
- Minimise product damage, protect shipment
- ESD versions protect against damage of electric discharge

- Options*:



Pallet Lid
800 × 600 mm
Universal Version
Standard colours: ■ ■ ■ ■ ■



Pallet Lid
800 × 600 mm
CR2 Version
Standard colours: ■ ■ ■ ■ ■



Pallet Lid
800 × 600 mm
D2 Version
Standard colours: ■ ■ ■ ■ ■



Pallet Lid
1200 × 800 mm
Standard colours: ■ ■ ■ ■ ■



Pallet Lid
1200 × 1000 mm
Standard colours: ■ ■ ■ ■ ■

Pallet Collar

Easy, foldable handling

- 100% PE, no other materials (e.g. metal)
- Volume flexibility as use is adjustable to transport volume
- Increased vehicle fill (double or triple stacking)

- Options*: - Rims



CC1
1220 × 815 × 300 mm
Standard colours: ■

* Depending on type and version, Craemer plastic pallets are available with various rim options, corrosion-protected reinforcement profiles, welded runners or Palgrip® anti-slip coating.

Standard colours:

- Light grey
- Basalt grey
- Dark grey
- Black
- White
- Light blue
- Red brown

Large Load Carriers

High volume and robust

Pallet Boxes

CB Pallet Boxes

High volume. Robust. Food grade.

- One-piece injection-moulded
- Robust and economic
- Ideal for the daily handling in numerous industries
- Lid: protects the cargo, minimises product damage. Secure hold due to latching.
- UN-Box: Pallet boxes in Euro and industrial size for the logistics processes connected with production, storage and disposal of lithium accumulators and batteries (UN-certified)



CB1 470 I
1200 × 800 × 740 mm
Standard colours: ■■■■■■



CB3 610 I
1200 × 1000 × 740 mm
Standard colours: ■■■■■■



CB3 High ~1000 I
with runners
1200 × 1000 × 1140 mm
Standard colours: ■■■■■■



CB3 High ~1000 I
with feet
1200 × 1000 × 1140 mm
Standard colours: ■■■■■■



CB1 470 I
for dangerous goods,
with lashing straps and lid
UN-4H2
1200 × 800 × 765 mm



CB3 610 I
for dangerous goods,
with lashing straps and lid
UN-4H2
1200 × 1000 × 765 mm



Lid CB1
1236 × 836 mm
Standard colours: ■■■■■■



Lid CB3
1237 × 1036 mm
Standard colours: ■■■■■■



SB Pallet Boxes

Extremely robust

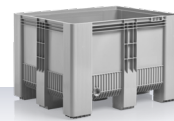
- Manufactured in single mould with 3 runners or 9 feet, solid or fully perforated version
- Excellent stability due to thick walls and bottom and one-piece runners/feet moulding
- Euro stacking system for compatibility with a variety of other pallet boxes
- Lid: protects the cargo, minimises product damage. Secure hold due to latching.



SB3 610 I
with runners and
closed sides
1200 × 1000 × 790 mm
Standard colours: ■■■■■■



SB3 610 I
with runners and
perforated sides
1200 × 1000 × 790 mm
Standard colours: ■■■■■■



SB3 610 I
with feet and
closed sides
1200 × 1000 × 790 mm
Standard colours: ■■■■■■



SB3 610 I
with feet and
perforated sides
1200 × 1000 × 790 mm
Standard colours: ■■■■■■



Lid SB3
1221 × 1019 mm
Standard colours: ■■■■■■



HB Pallet Boxes

Hygienic and extremely robust

- First and only completely closed pallet box
- Cavity and rib-free construction, welded runners and rounded shape provide no surface for bacteria to settle
- Maximum impact and breakage resistance
- Euro stacking system for compatibility with a variety of other pallet boxes
- Lid: protects the cargo, minimises product damage. Secure hold due to latching.



HB3 620 I
1200 × 1000 × 790 mm
Standard colours: ■■■■■■



Lid HB3
1221 × 1019 mm
Standard colours: ■■■■■■



Pallet Boxes

KUBO

For heavy weights

- External dimensions compatible with the metal grid box (Gitterbox) enable use in existing systems
- Large front drop door on the long side for easy loading and unloading
- Enormous stability and excellent stackability
- Easy to clean, guaranteed corrosion-free, versatile, suitable for pooling and repairable



KUBO 610 I
1240 × 835 × 973 mm
Standard colours: ■

Nestable Containers

Nestable Large Containers

210–400 l

- Ideal for storage and transport
- Nestable, forklift accessible
- Smooth walls



Nestable Large Container 210 l
Accessories:
Lid, trolley
790 × 605 × 685 mm
Standard colours: □



Stack & Nest Container 300 l
1200 × 780 × 630 mm
Standard colours: ■



Nestable Large Container 400 l
Accessories:
Lid, trolley
945 × 725 × 830 mm
Standard colours: □



Universal Containers / Grit Bins

210–400 l

- Ideal for various applications
- Facilitate a safe and clean transportation



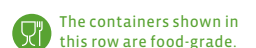
Universal Container / Grit Bin 210 l
Accessories:
Lid or hinged lid
790 × 605 × 685 mm
with lid 775 mm
Standard colours: ■ ■



Universal Container / Grit Bin 400 l
Accessories:
Lid or hinged lid 945 × 725 × 830 mm
with lid 930 mm
Standard colours: ■ ■



Standard colours:
■ Light grey ■ Blue ■ Yellow
■ Basalt grey □ White
■ Light blue ■ Red ■ Green



Plastic Containers

First-class quality for various applications

Transport and Stacking Boxes

25–80 l

- Reliable and hygienic safety
- Extremely versatile
- Robust and resilient



Stacking Box 25 l
475 × 340 × 220 mm
Standard colours: □



Stacking Box 55 l
750 × 445 × 200 mm
Standard colours: □



Transport Box 40 l
730 × 480 × 180 mm
Standard colours: □



Transport Box 80 l
760 × 500 × 320 mm
Standard colours: □



Round Container

20–200 l

- Ideal for mixing, storing and transporting of goods
- Perfectly tailored to the requirements of hygiene-sensitive application areas
- Durable, robust quality



Bin 40 l
Accessories:
Lid, trolley
Ø 420 × 445 mm
Standard colours: □



Bin 50 l
Accessories:
Lid, trolley
Ø 420 × 540 mm
Standard colours: □



Bin 75 l
Accessories: Lid or
snap-on lid, trolley
Ø 515 × 530 mm
Standard colours: □



Bin 110 l
Accessories: Lid or
snap-on lid, trolley
Ø 515 × 733 mm
Standard colours: □



Bin 200 l
Accessories:
Lid, trolley
Ø 730 × 670 mm
Standard colours: □



Bucket 20 l
Ø 380 × 280 mm
Standard colours: □



Bucket 30 l
Ø 380 × 420 mm
Standard colours: □



Tub 65 l
Accessories: Lid
Ø 590 × 330 mm
Standard colours: □



Tub 85 l
Accessories: Lid
Ø 628 × 385 mm
Standard colours: □



Trough

100 l

- Ideal for many application areas, e.g. as portable washing trough or mixing trough
- Available with or without drain opening



Trough 100 l
with drain and plug
Accessories:
Table or wall frame
980 × 550 × 310 mm
Standard colours: □



Trough 100 l
Accessories:
Table or wall frame
980 × 550 × 310 mm
Standard colours: □



Large Container

125 l

- Ideal for storage and transport
- Smooth walls



Large Container 125 l
Accessories: Lid
505 × 505 × 715 mm
Standard colours: □



Stack & Nest Boxes / Fish Boxes

10–50 kg / 15–75 l

- Long lifetime, high manufacturing quality
- Break resistant, impact resistant
- Stackable, nestable, high volume reduction



Stack & Nest Box / Fillet Box 10 kg / 15 l
600 × 400 × 125 mm
Standard colours: ■



Stack & Nest Box / Fillet Box 15 kg / 20 l
600 × 400 × 150 mm
Standard colours: ■



Stack & Nest Box / Fish Box 30 kg / 32 l
Accessories: Lid
600 × 400 × 225 mm
Standard colours: ■■



Stack & Nest Box / Fish Box 20 kg / 35 l
800 × 450 × 190 mm
Standard colours: ■□



Stack & Nest Box / Euro Fish Box 25 kg / 40 l
Accessories: Lid
800 × 400 × 225 mm
Standard colours: ■□



Stack & Nest Box / Fish Box 40 kg / 60 l
800 × 450 × 270 mm
Standard colours: ■□



Stack & Nest Box / Fish Box 50 kg / 75 l
890 × 560 × 235 mm
Standard colours: ■□



Craebox 50 kg / 70 l
813 × 483 × 220 mm
Standard colours: □

Containers for the Construction Industry

20–200 l

- Suitable for use in various trades
- Heavy quality with high wall thickness
- TÜV tested (FMK and D-SMK)



Bucket 20 l
Ø 380 × 280 mm
Standard colours: ■



Bucket 30 l
Ø 380 × 420 mm
Standard colours: ■



Mortar Tub 90 l
Accessories: Trolley
Ø 628 × 385 mm
Standard colours: ■



Mortar Tub (D-SMK) 90 l
with coated tubular steel frame,
Accessories: Trolley
Ø 628 × 385 mm
Standard colours: ■

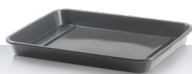


Ready Mortar Skip (FMK) 200 l
990 × 665 × 490 mm
Standard colours: ■■■

Universal Trough

45 l

- Ideal for various applications
- Facilitates a safe and clean transportation



Universal Trough 45 l
910 × 700 × 90 mm
Standard colours: ■

Poultry Transport Crate

90 l

- Integrated door on the top
- Good ventilation characteristics
- Stackable



Poultry Transport Crate 90 l
840 × 495 × 295 mm
On request
Standard colours: ■

Standard colours:

- Light grey
- Basalt grey
- Black
- Blue
- Blue
- White

- Red
- Red brown
- Yellow



The containers shown in this row are food-grade.

Wheeled Bins

Product range for municipal and industrial applications

MGBneo 120-360 l

- Optimised, robust construction
 - Particularly economical
 - Resource-friendly bin concept
- Standard colours: ■■■■



120 l



140 l



180 l



DIN EN 840



240 l



240 l Saloon Lid
Accessories: Divider wall



340 l / 360 l



340 l / 360 l Saloon Lid
Accessories: Divider wall



DIN EN 840

MGBneo⁴ 660-1100 l

- Suitable for industrial applications and any kind of high-volume waste
 - Safe and robust lifting and emptying
- Standard colours: ■■■■



660 l



770 l



1100 l



1100 l
Lid-in-Lid



DIN EN 840

Hazardous Waste Containers 120-770 l

- Highest product quality for durability, even with intensive use
 - 2-wheel wheelee bin MGBneo for proper disposal of empty or partially emptied aerosol cans and containers (UN 1950)
 - 2-wheel and 4-wheel wheelee bins MGBneo for disposal of clinical and medical waste (UN 3291)
- Standard colours: ■■



120 l
Waste aerosols container
UN 1950



240 l
Waste aerosols container
UN 1950



340 l / 360 l
Clinical waste container
UN 3291



770 l
Clinical waste container
UN 3291



DIN EN 840
UN 1950
UN 3291

Please note: The acronym "MGB" is a standard European waste industry term used to describe a mobile garbage bin (wheelee bin).

Depending on the bin type, numerous extra features and fittings are available to individually adjust the container to fit your requirements. Different aperture options, locking systems, individual marking and sequential numbering as well as an ergonomic lid-in-lid solution for easy lid opening from both sides are available.

MGBplus 120-240 l

- Exceptional stability
- Suitable for high stress
- Specially shaped front area

● Standard colours: ■■■■



120 l



140 l



180 l



240 l



DIN EN 840

MGB 60-80 l

- Ideal for separation of different waste streams in small households

● Standard colours: ■■■■



60 l



80 l



DIN EN 840

DU 60-240 l

- Self-centering container mounting
- Fast and safe emptying
- Robust due to specially shaped front area

● Standard colours: ■■■■



60 l



80 l



120 l



240 l



DIN 30760

Sheet Steel 240-1100 l

- Suitable for oily and hot waste
- Ideal for industry and garage



MGB sheet steel 240 l



MGB sheet steel 1100 l



MGB sheet steel 1100 l

DIN EN 840
EN ISO 1461

Sheet Steel 2500-7500/8000 l

- For applications with large waste volumes
- Extremely robust



Rear-end loading container
2500 l, 3000 l, 5000 l, 7000 l
(Images not to scale)



Front-end loading container
2500 l, 4500 l, 6500 l
(Images not to scale)



Front-end loading container
2500 l, 5000 l, 7500/ 8000 l
(Images not to scale)

EN 12574
EN ISO 1461

Standard colours:
■ Anthracite ■ Blue
■ Green ■ Yellow
■ Brown ■ Red



UN certified container



Awarded with the GGAWB-sign of the Quality Control Association of Waste and Recycling Containers (RAL)



Awarded the Blue Angel for special environmental friendliness

Material

High-quality and sustainable

Craemer focuses on quality and sustainability. This begins with the general orientation of manufacturing durable and reusable products using only pure, high-quality PE that has been tested to high quality standards.

Craemer plastic pallets, pallet boxes, plastic boxes and wheelie bins are therefore all made from high-quality PE. This material offers high impact resistance, stability and durability. Compared to other plastics, PE can be used without breakages, even at low and sub-zero temperatures. It is highly resistant to acids, alkaline solutions and chemicals.

Redemption at the end of the pallets useful service life

Sustainable and future-oriented management of natural resources is our mission. This is why our responsible interaction with the environment includes the withdrawal of products from circulation due to their age, or as soon as they are no longer in good working order.

For Craemer products, that takes a long time (our customers' pallets have been in use for 10 years or more), but even for Craemer products, there comes a time to renew the old. Just contact us and we'll be happy to help. It is a good contribution to sustainable trade to start the recycling life-cycle again with this high-grade material.

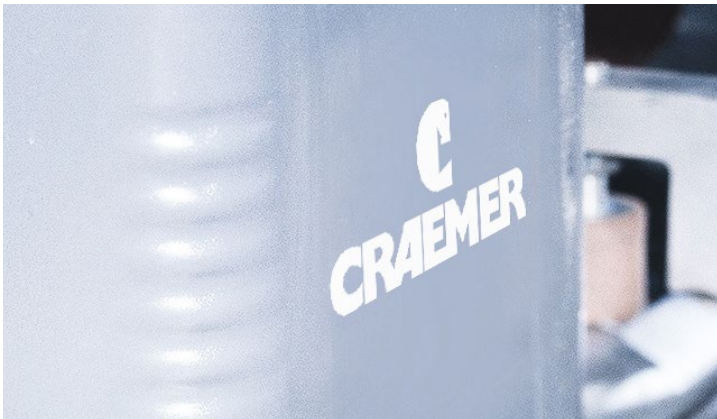
Colours and Labelling

Flexibility for your colour management

Need a special colour? No problem, we offer a large range of standard and special colours. All Craemer products can of course also be personalised with lettering, logo and sequential numbering. (All custom requirements may be subject to minimum order quantities and production positioning. Details available upon request.)

The following labelling options are available:

- Hot stamping of logo, lettering or sequential numbering
- Logo insert in mould



Example: Logo (hot stamping)



Example: Lettering (hot stamping)

Quality Assurance

In-house Testing Facilities

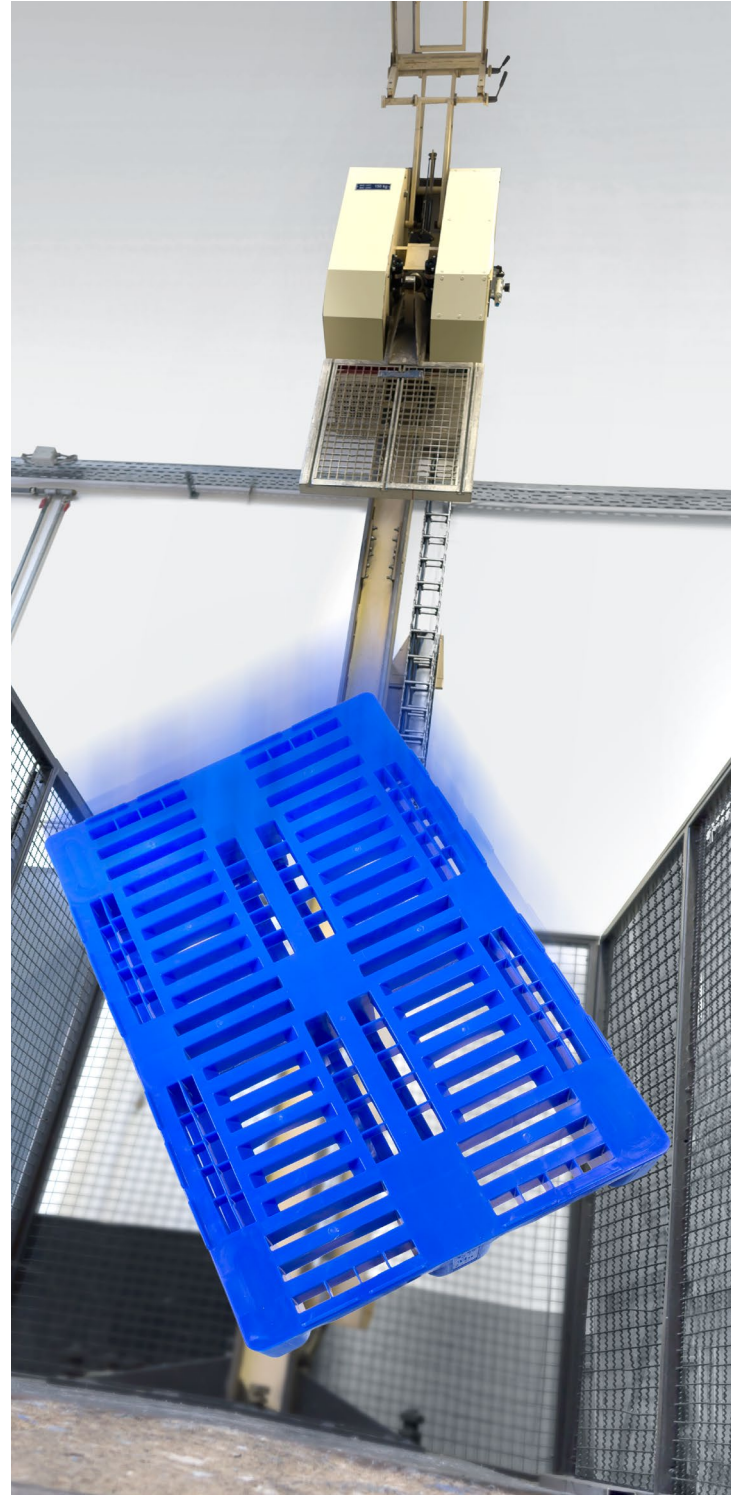
When planning and implementing product inspections, Craemer draws on its in-house expertise: Almost all the necessary testing facilities are available in our own laboratories. During the incoming goods inspection, product testing and initial sample inspection, our qualified team ensures that all items are of the required quality. For special tests or product certifications, we are in close contact with various external testing institutes.

Active inspections plastic products

- General appearance, processing
- Ageing tests
- Torque testing
- Pressure tests
- Bending tests
- Dynamic load tests (ball drop tests, corner drop tests)
- Weight inspections
- Hardness tests
- Climate tests
- Inspections by attributes and measures
- Practical tests (Roller conveyor tests, fork lift and lift truck tests)
- All types of special audits
- Static load tests
- Visual inspections
- Tensile tests and strength testing



Lifting and emptying test



Corner drop test

**Do you have questions or require detailed information?
We look forward to your call / message.**

Germany (Headquarters Export Department)
Craemer GmbH
Brocken Strasse 1
33442 Herzebrock-Clarholz | Germany
Tel.: +49 5245 43-0
E-mail: info@craemer.com
www.craemer.com/en

United Kingdom
Craemer UK Ltd
Craemer House
Hortonwood 1
Telford, Shropshire TF1 7GN | United Kingdom
Tel: +44 1952 6078-00 | Fax: +44 1952 6078-01
E-mail: info@craemer.com
www.craemer.co.uk

